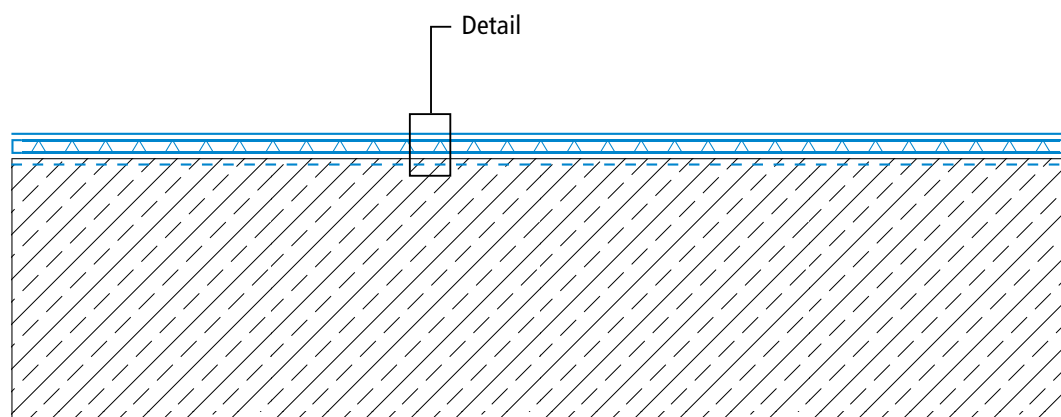
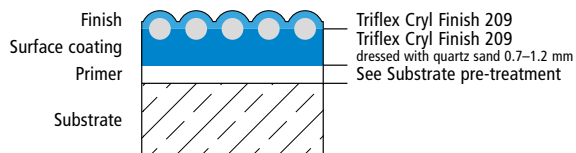


Triflex DeckCoat

System drawings

Area

System set-up – Detail

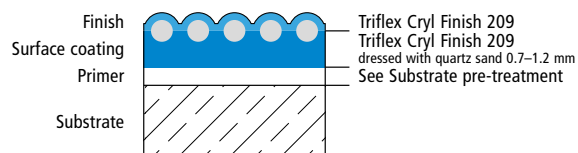


Triflex DeckCoat

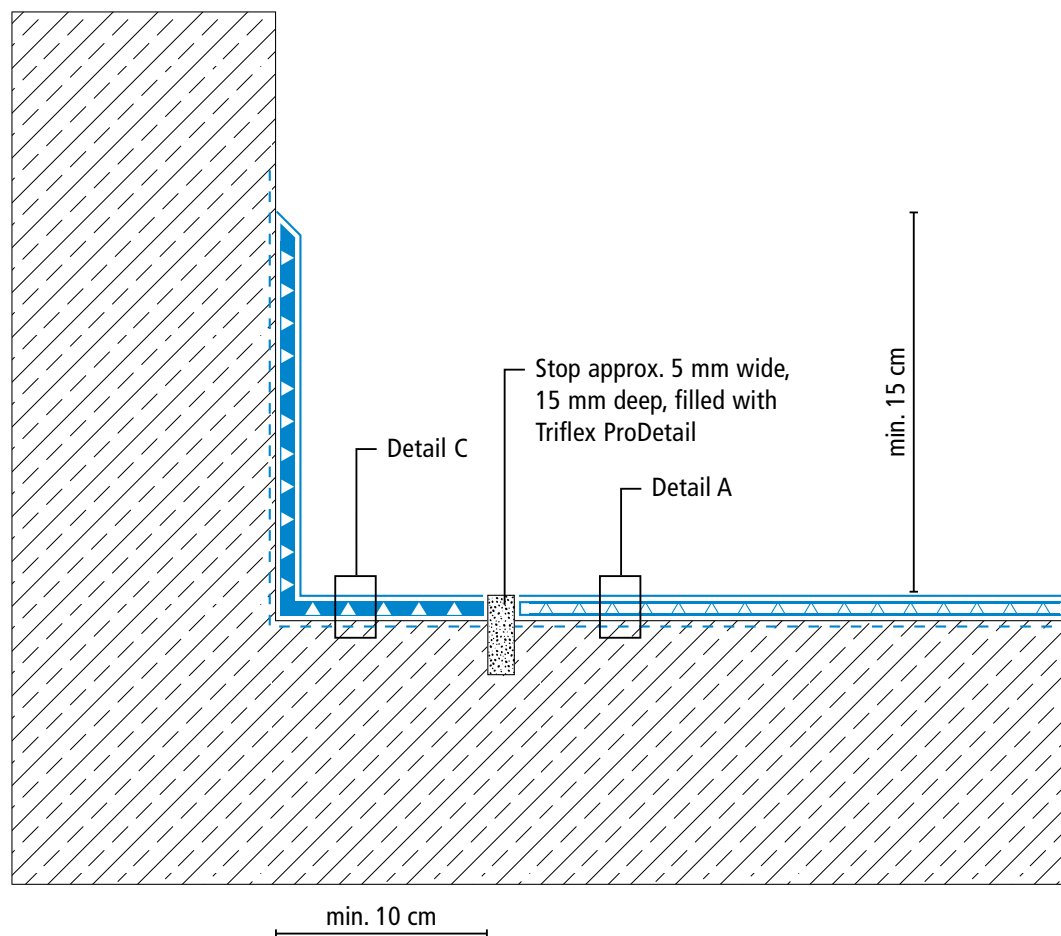
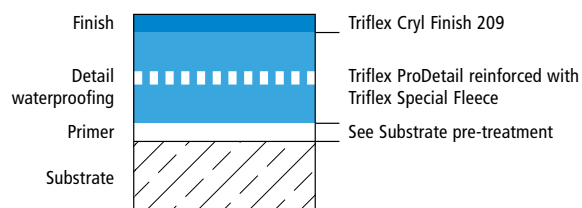
System drawings

Wall junction

System set-up – Detail A



System set-up – Detail C

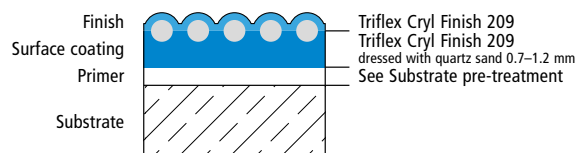


Triflex DeckCoat

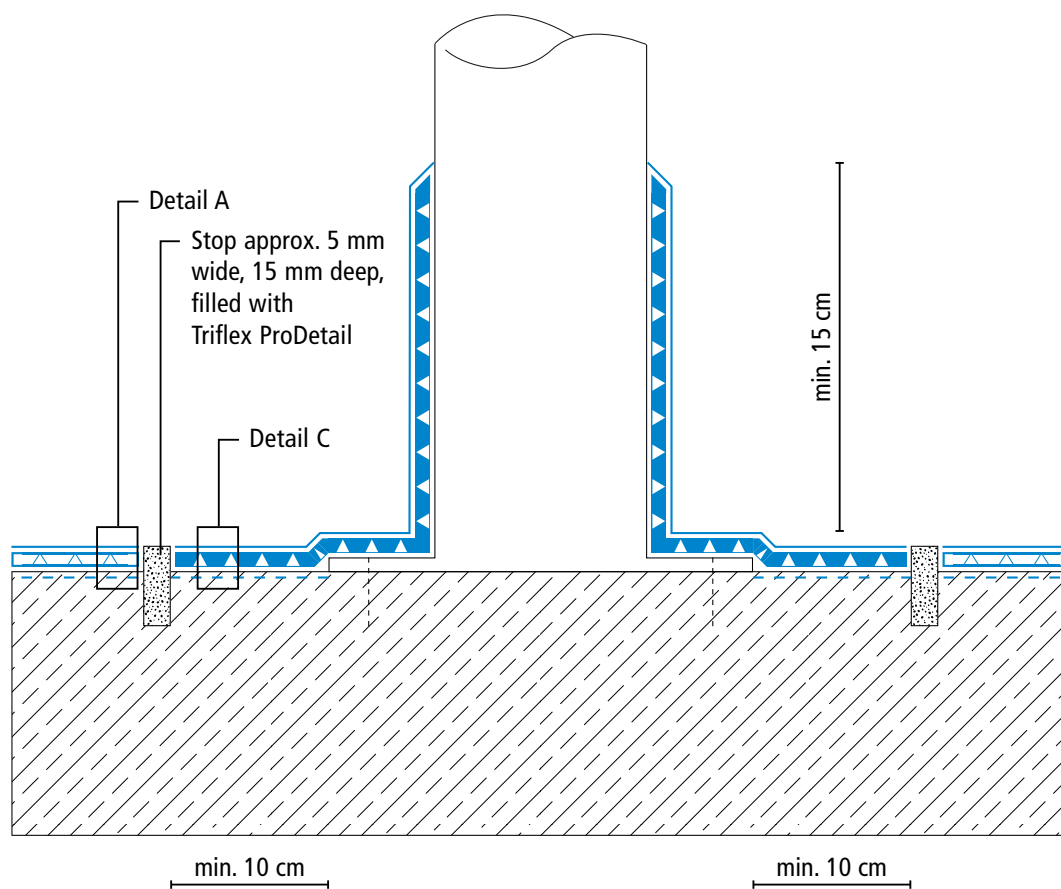
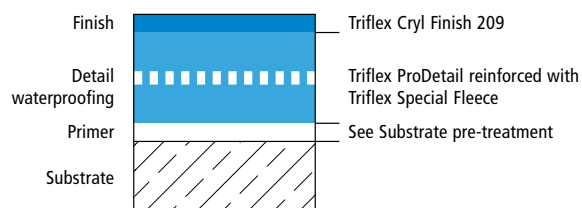
System drawings

Settlement joint

System set-up – Detail A



System set-up – Detail C

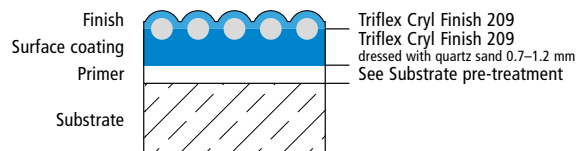


Triflex DeckCoat

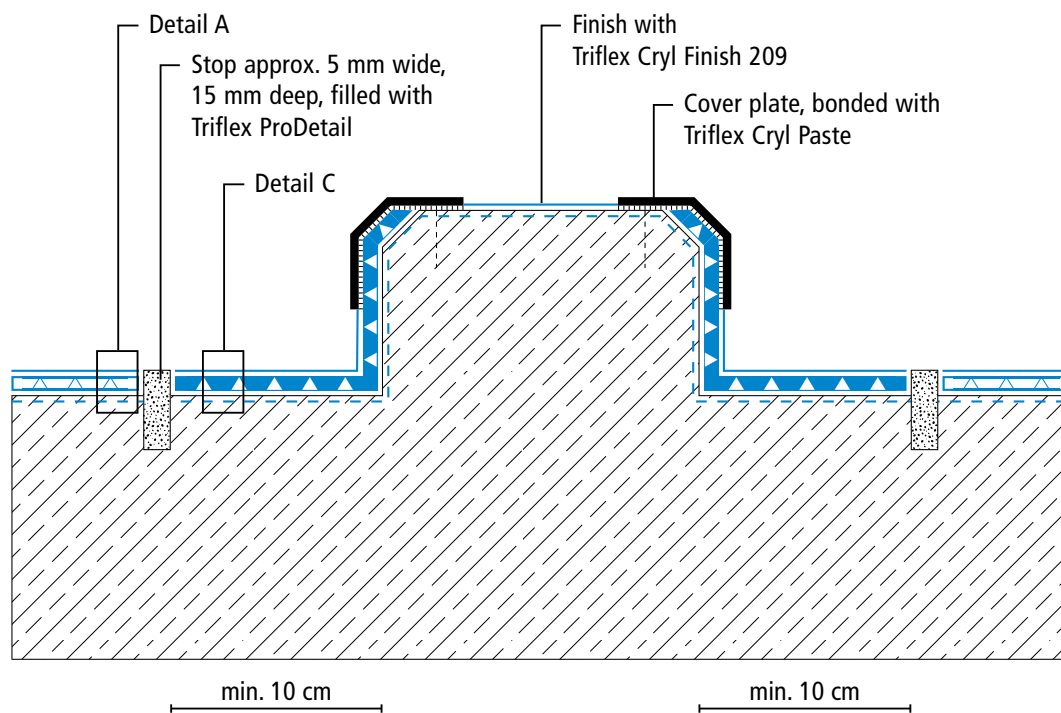
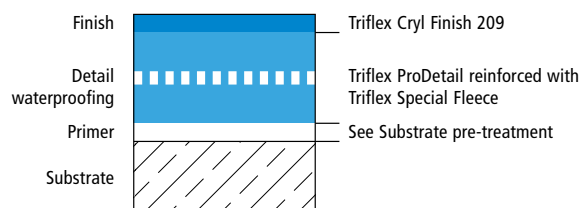
System drawings

Kerb

System set-up – Detail A



System set-up – Detail C

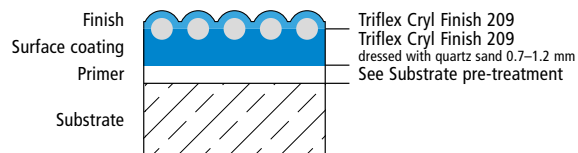


Triflex DeckCoat

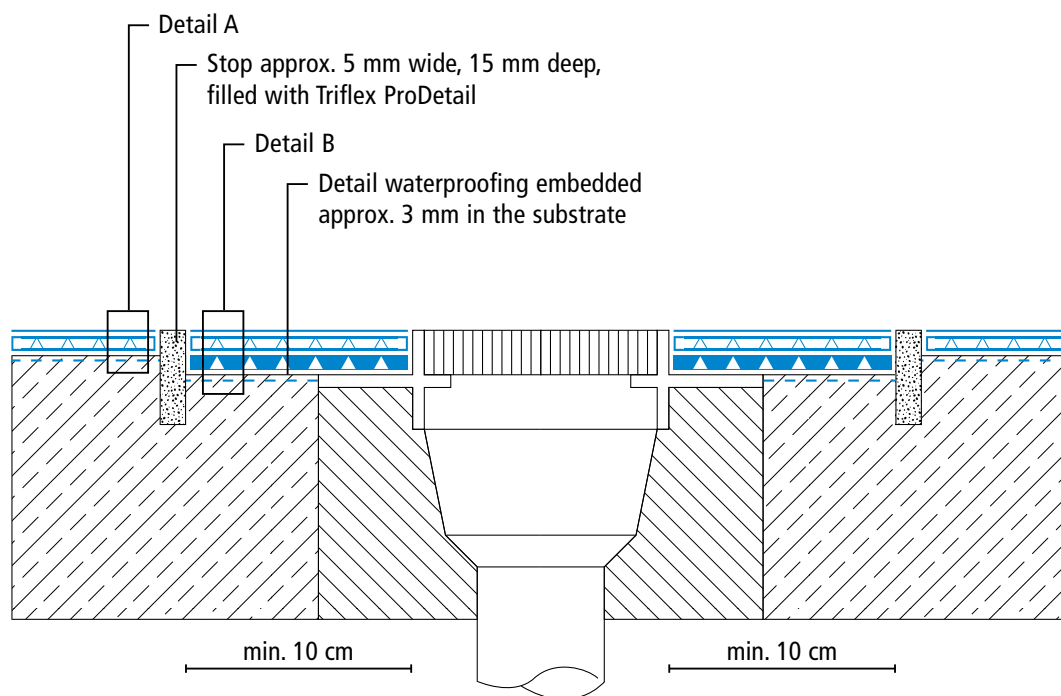
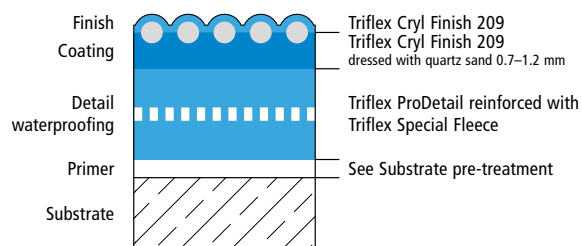
System drawings

Gully

System set-up – Detail A



System set-up – Detail B

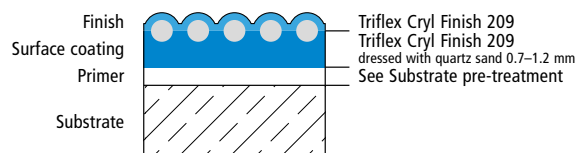


Triflex DeckCoat

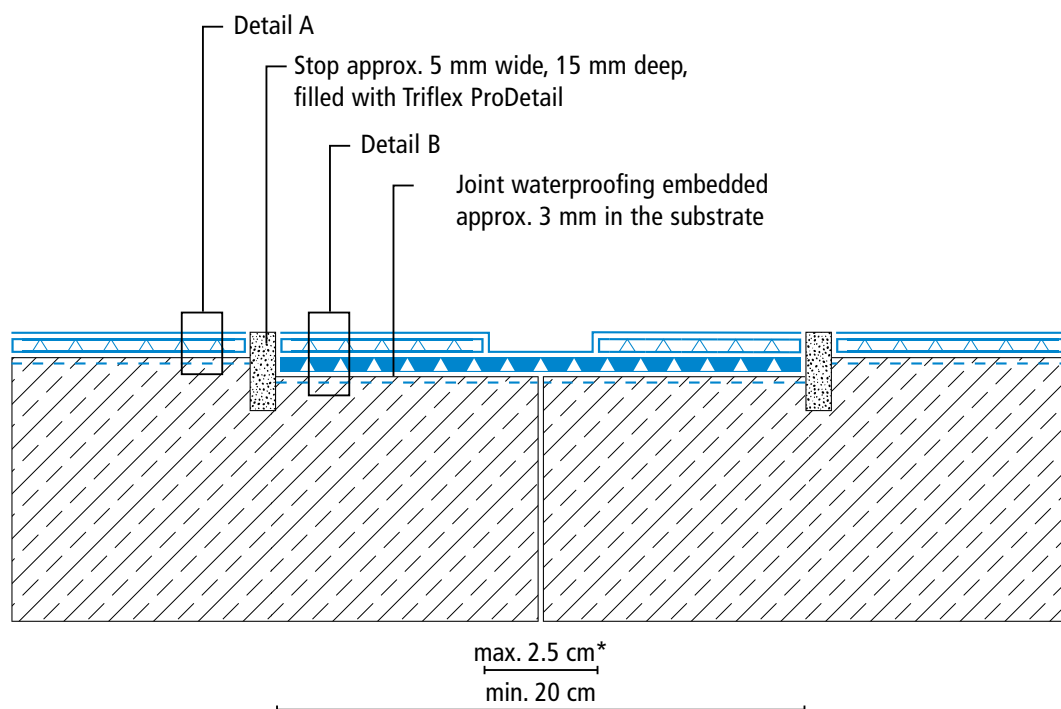
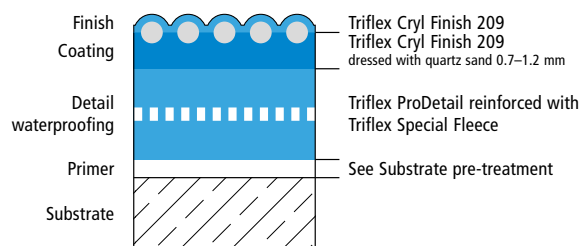
System drawings

Construction joint

System set-up – Detail A



System set-up – Detail B



* Omission of coating (see system description)

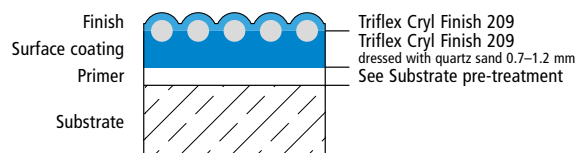
Height differences between fleece overlaps are exaggerated.

Triflex DeckCoat

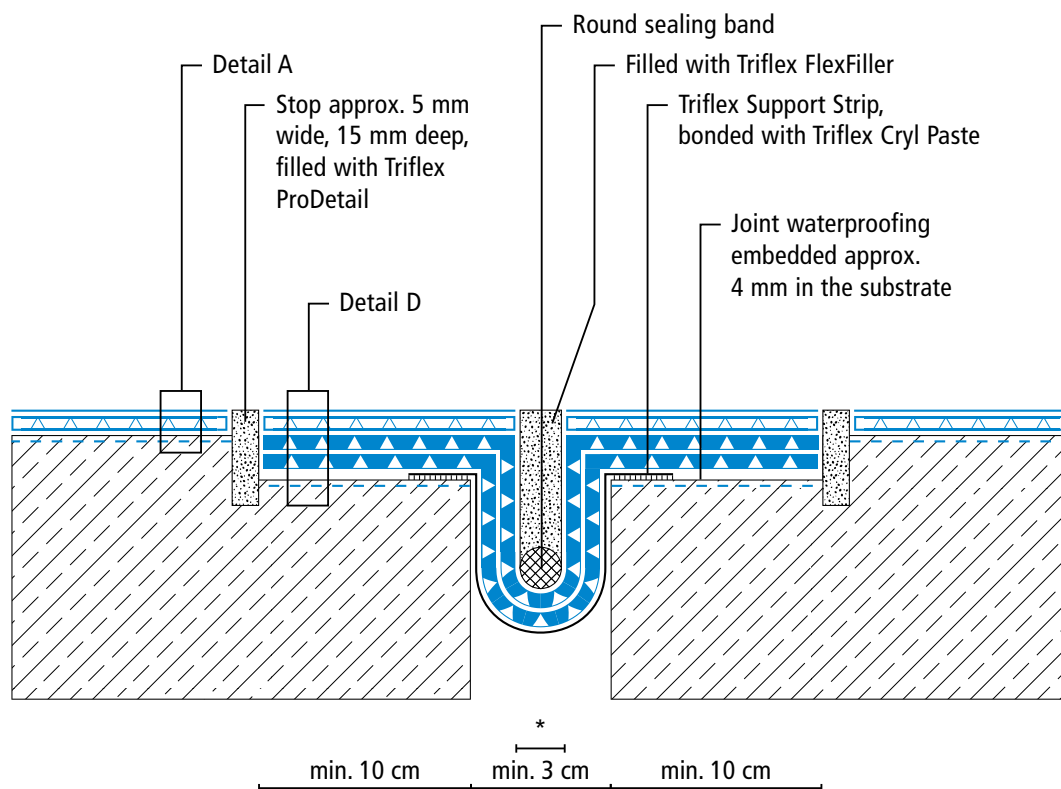
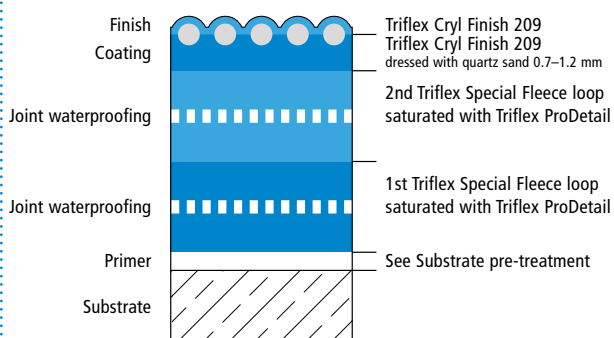
System drawings

Settlement joint surface

System set-up – Detail A



System set-up – Detail D



* Omission of coating and finish (see system description)

Height differences between fleece overlaps are exaggerated.

Triflex DeckCoat

System drawings

Settlement joint – wall junction

