



Product information

Applications

The Triflex FloorTattoo is used for the surface design of Triflex systems and is combined with the finishing variants Triflex Micro Chips or Triflex Colour Design.

Properties

Triflex FloorTattoo is a 3-ply application sheet, consisting of a masking sheet, a self-adhesive sandblasting sheet (sheet grid) and a backing sheet, for creating logos, symbols or other types of decoration on balcony surfaces.

Pack size

Application: Positive / Negative

Triflex FloorTattoo Dandelion
Dimensions: 95 cm x 120 cm

Triflex FloorTattoo Antlers
Dimensions: 66 cm x 80 cm

More motifs can be found in the brochure
"Surface Design – Triflex Creative Design".

Storage

Store in a dry place between +10 °C and +30 °C. Avoid direct contact with sunlight. Store at constant temperatures, away from direct sunlight in storage and on the construction site.

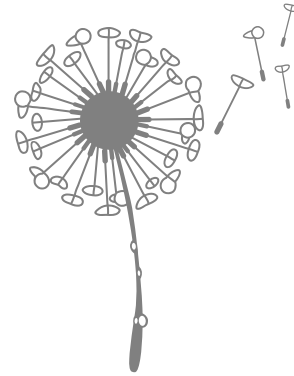
Conditions for use

When applying the Triflex FloorTattoo, temperatures must be as constant as possible. At the same time, the substrate temperature must not exceed +30 °C. Special attention must be paid to any unevenness, roughness or porosity.

Preparation of the substrate

Before applying the pattern or decoration, and during application, always ensure the correct gradient and evenness of the substrate. For the drainage of rainwater and to avoid puddles, we recommend a gradient.

When affixing the sheet, the substrate temperature must be at least +10 °C and at least 3 °C above dew point. Below that, a separating film of moisture can form on the surface to be worked on (DIN 4108-5, Table 1). See dew point temperature table.



Instructions for use

The Triflex FloorTattoo is affixed to the finish layer. If upturns, details, etc. have been waterproofed, the pattern must be applied to these areas prior to finishing.

Material consumption

1 m² Triflex FloorTattoo per 1 m² substrate (plus offcuts) on a smooth, even surface.

General notes

We guarantee the consistently high quality of our products. Non-Triflex products must not be used with Triflex systems.

The advice we give in relation to the application of our products is based on extensive development and many years of experience, and is correct to the best of our knowledge. Given the multitude of on-site requirements, under the most varied of conditions, the user is required to test the product's suitability for its respective purpose. Technical information is subject to change without notice in the interests of technical advancement or enhancement of our products.