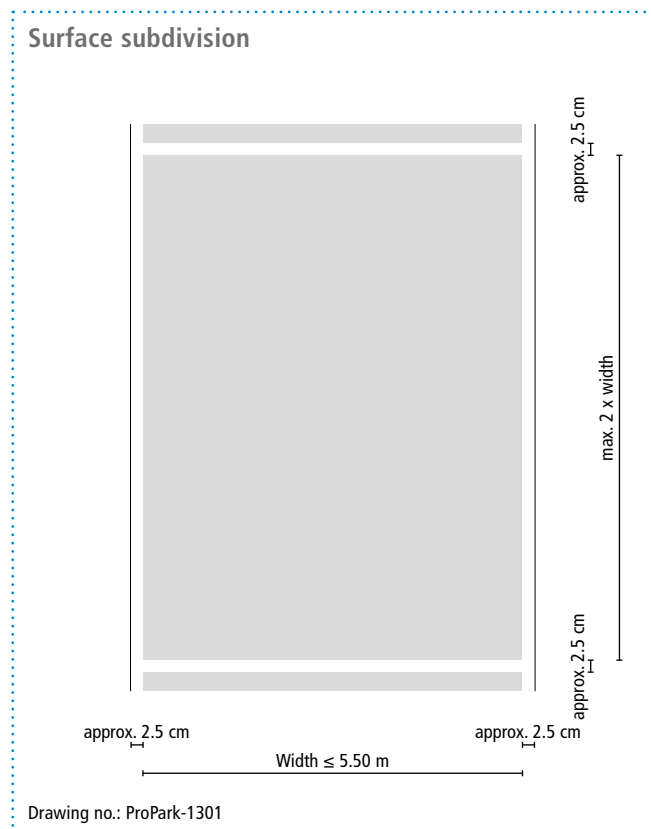


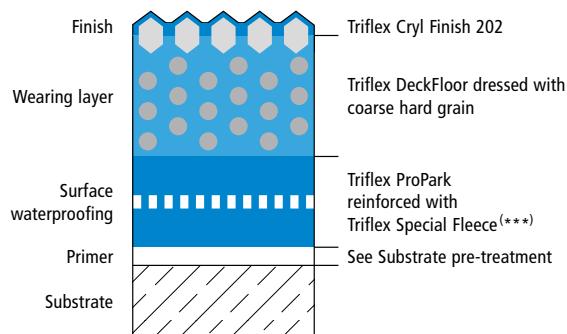
# Triflex ProPark® Variation 3



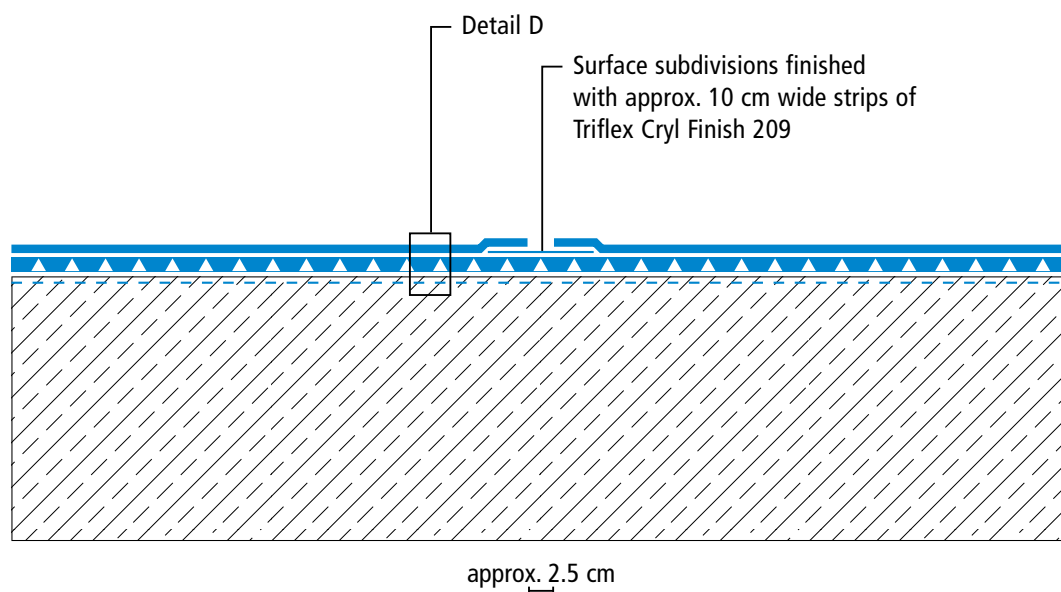
## System drawings



### System build-up – Detail D



### Surface

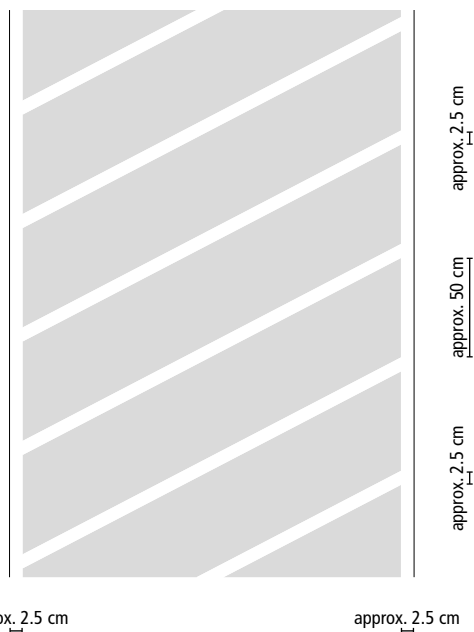


# Triflex ProPark® Variation 3



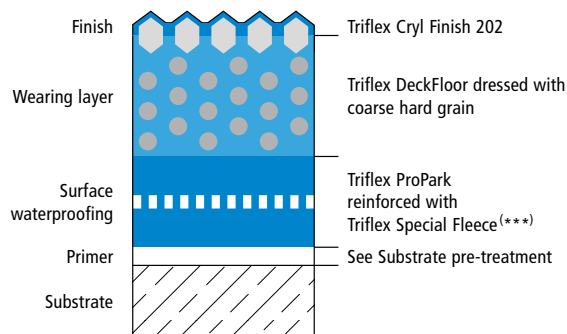
## System drawings

Ramp surface subdivision

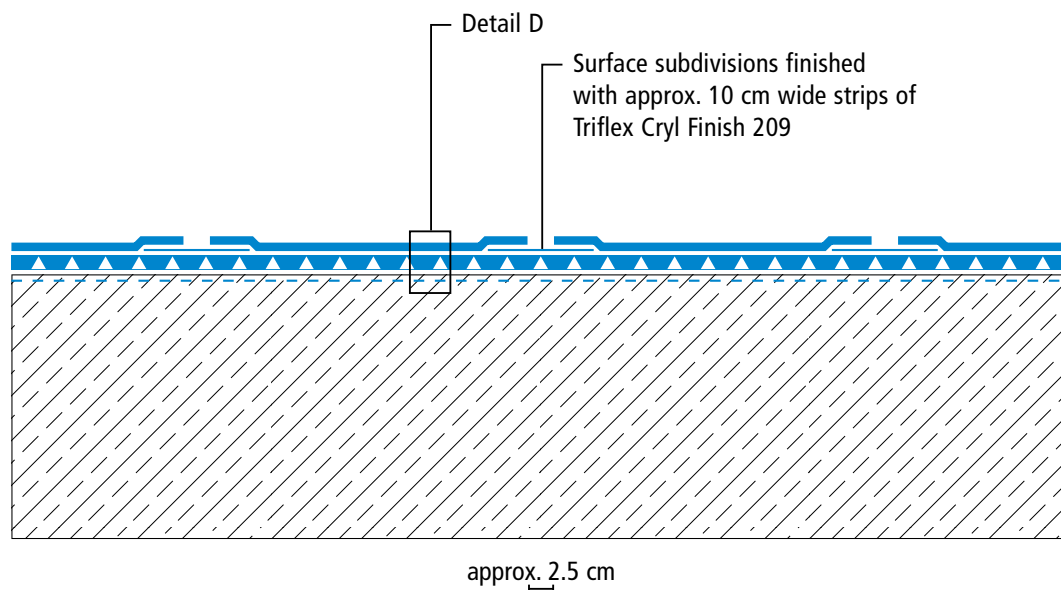


Drawing no.: ProPark-1303

System build-up – Detail D



Ramp



(\*\*\*) Triflex Special Fleece or Triflex Special Fleece PF

Height differences where the fleece overlaps are exaggerated.

Drawing no.: ProPark-1304

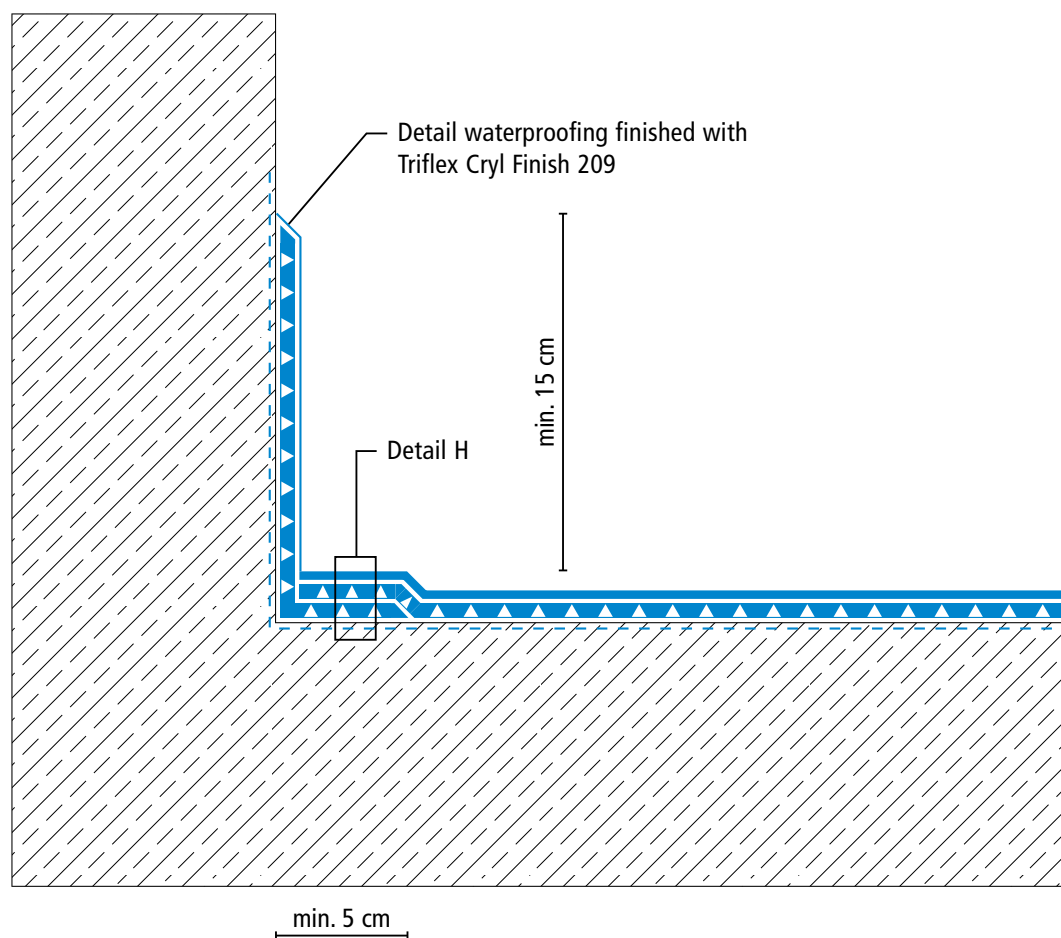
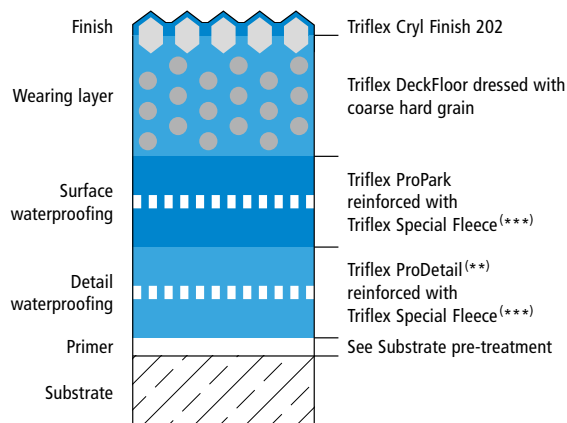
# Triflex ProPark® Variation 3



## System drawings

### Wall junction

#### System build-up – Detail H



(\*\*) Horizontal details (e.g. construction joints)  
can be waterproofed with Triflex ProDetail or Triflex ProPark.

(\*\*\*) Triflex Special Fleece or Triflex Special Fleece PF

Height differences where the fleece overlaps are exaggerated.

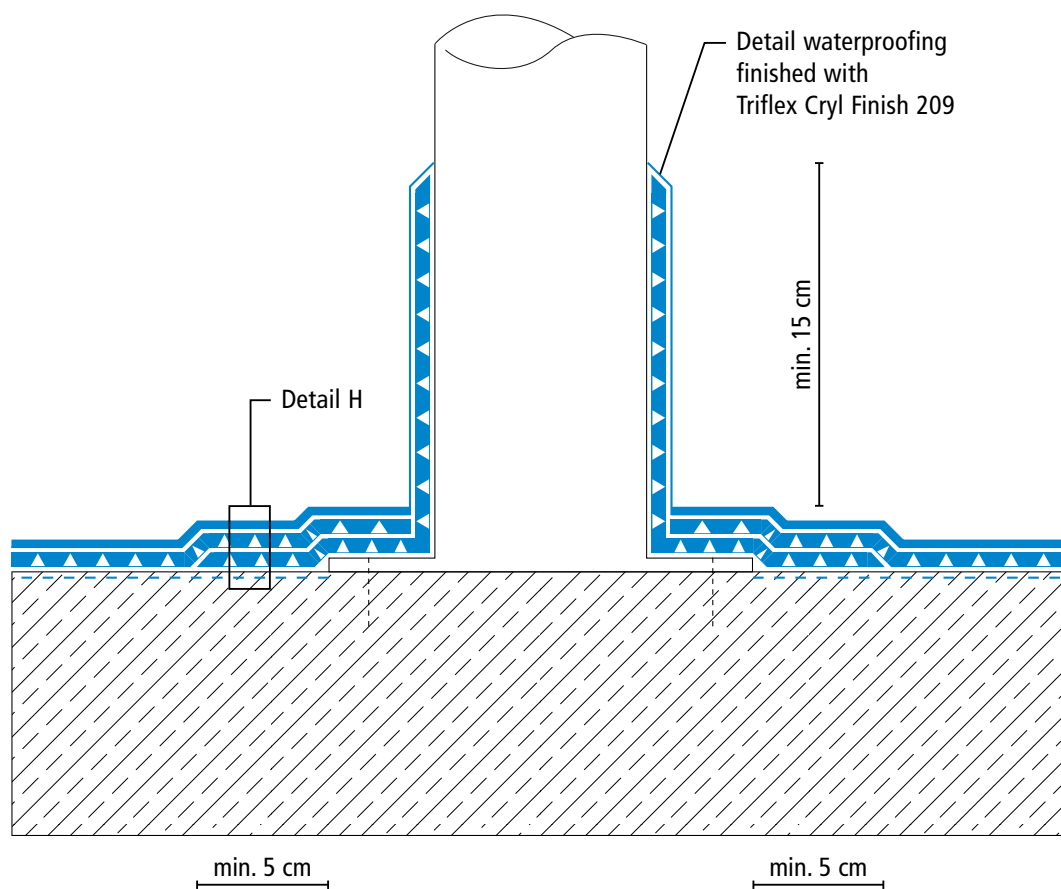
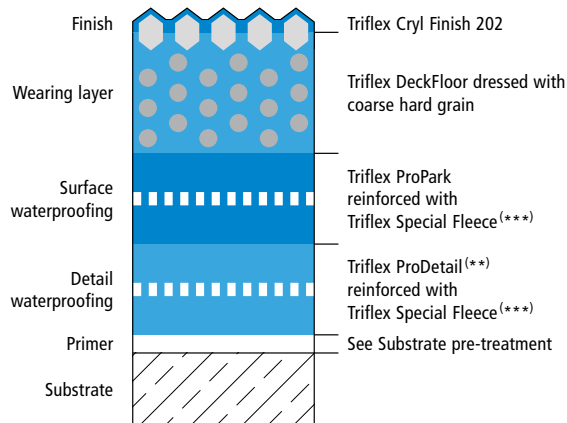
# Triflex ProPark® Variation 3



## System drawings

### Prop connector

### System build-up – Detail H



(\*\*) Horizontal details (e.g. construction joints) can be waterproofed with Triflex ProDetail or Triflex ProPark.

(\*\*\*) Triflex Special Fleece or Triflex Special Fleece PF

Height differences where the fleece overlaps are exaggerated.

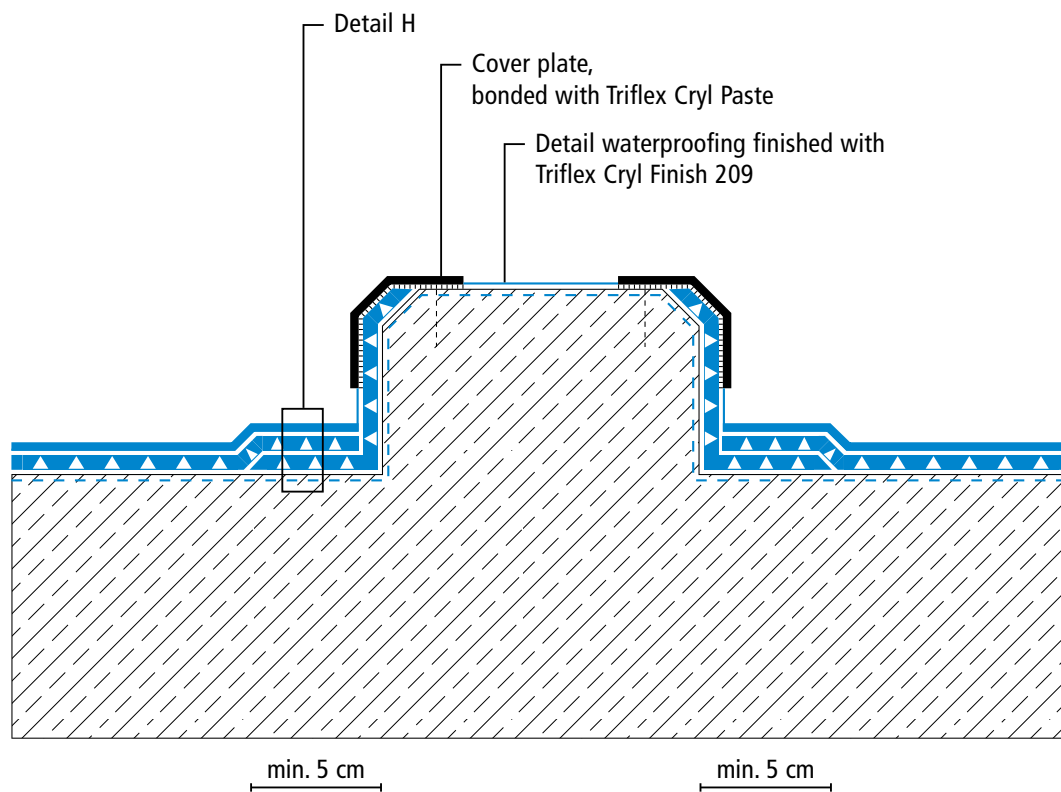
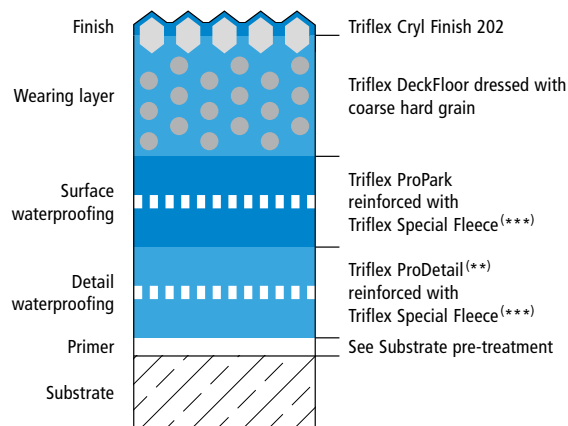
# Triflex ProPark® Variation 3



## System drawings

### Kerb

#### System build-up – Detail H



(\*\*) Horizontal details (e.g. construction joints) can be waterproofed with Triflex ProDetail or Triflex ProPark.

(\*\*\*) Triflex Special Fleece or Triflex Special Fleece PF

Height differences where the fleece overlaps are exaggerated.

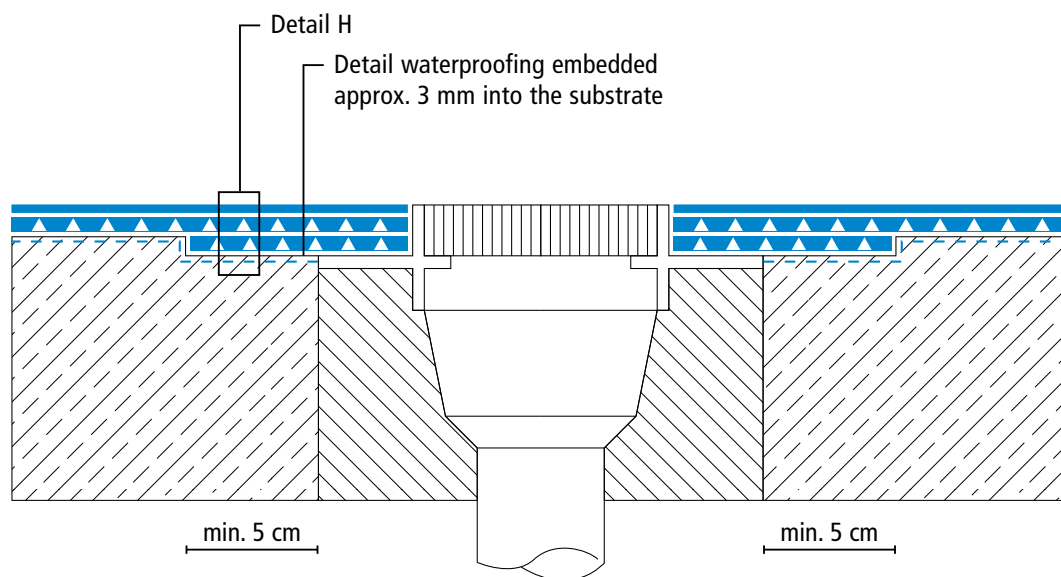
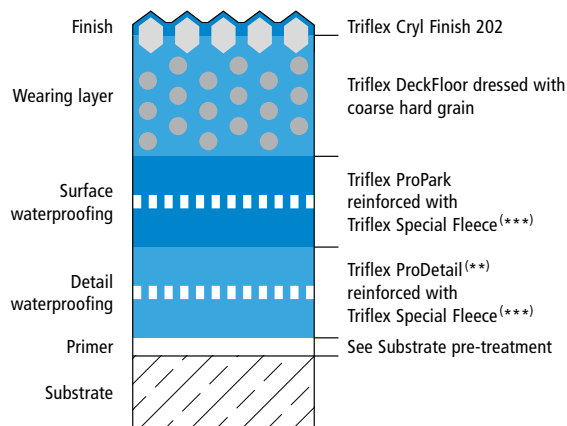
# Triflex ProPark® Variation 3



## System drawings

### Gully/Gutter

#### System build-up – Detail H



(\*\*) Horizontal details (e.g. construction joints) can be waterproofed with Triflex ProDetail or Triflex ProPark.

(\*\*\*) Triflex Special Fleece or Triflex Special Fleece PF

Height differences where the fleece overlaps are exaggerated.

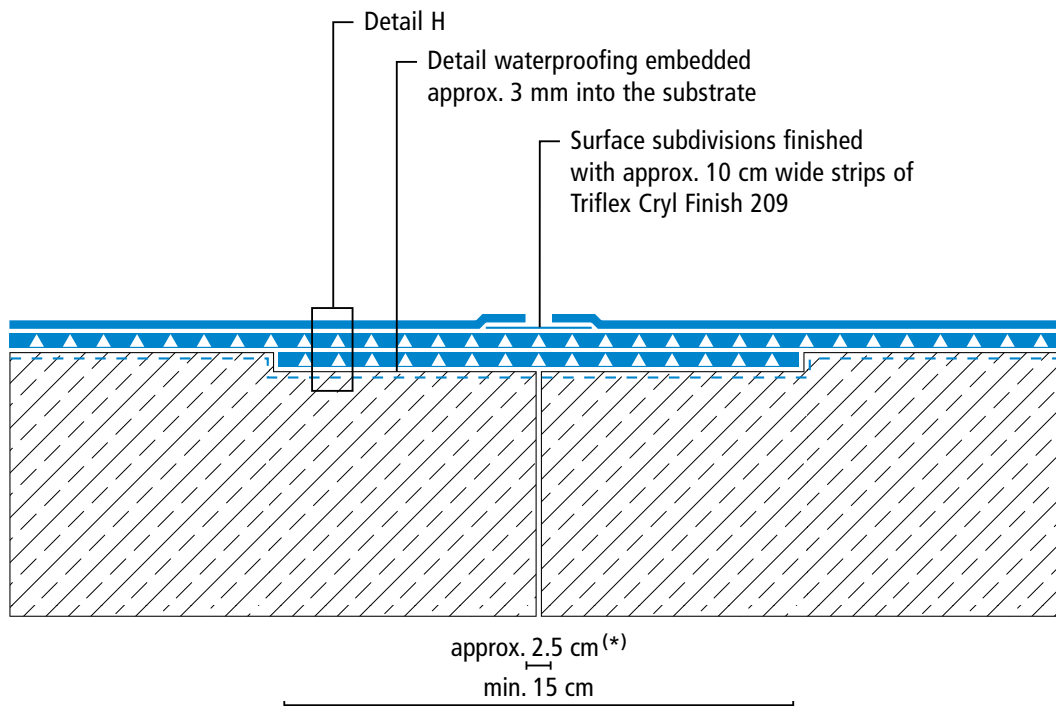
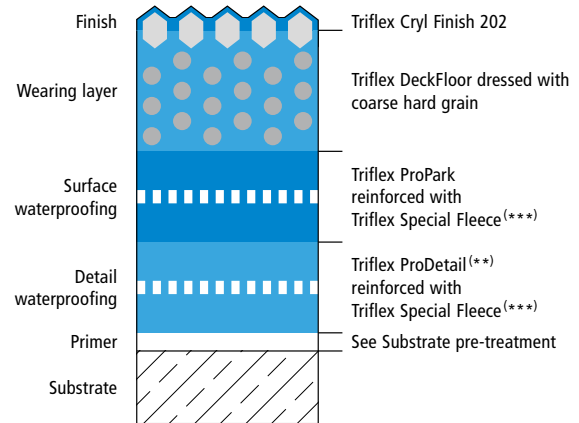
# Triflex ProPark® Variation 3



## System drawings

### Construction joint

#### System build-up – Detail H



(\*) Omission of wearing layer (see system description)

(\*\*) Horizontal details (e.g. construction joints) can be waterproofed with Triflex ProDetail or Triflex ProPark.

(\*\*\*) Triflex Special Fleece or Triflex Special Fleece PF

Height differences where the fleece overlaps are exaggerated.

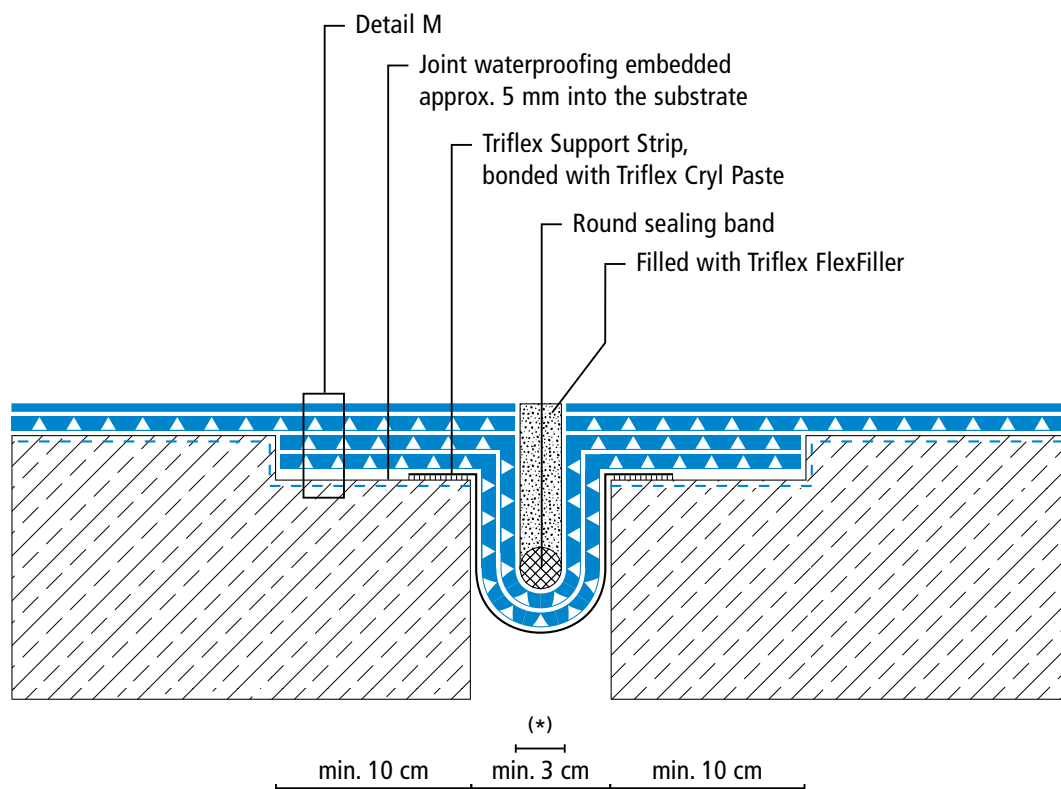
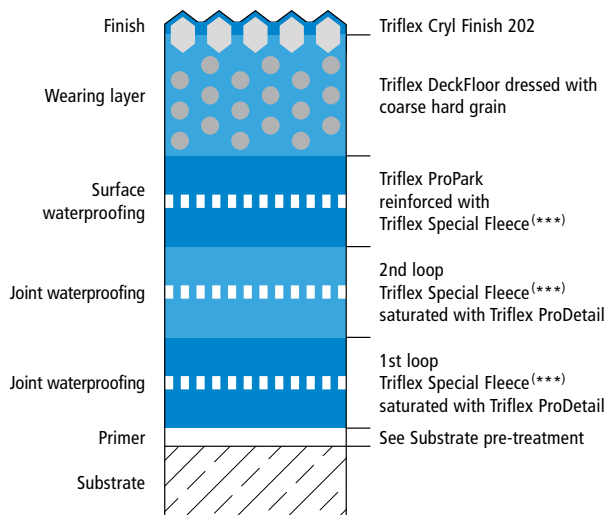
# Triflex ProPark® Variation 3



## System drawings

### Expansion joint surface

#### System build-up – Detail M



(\*) Omission of surface waterproofing and wearing layer (see system description)

(\*\*\*) Triflex Special Fleece or Triflex Special Fleece PF

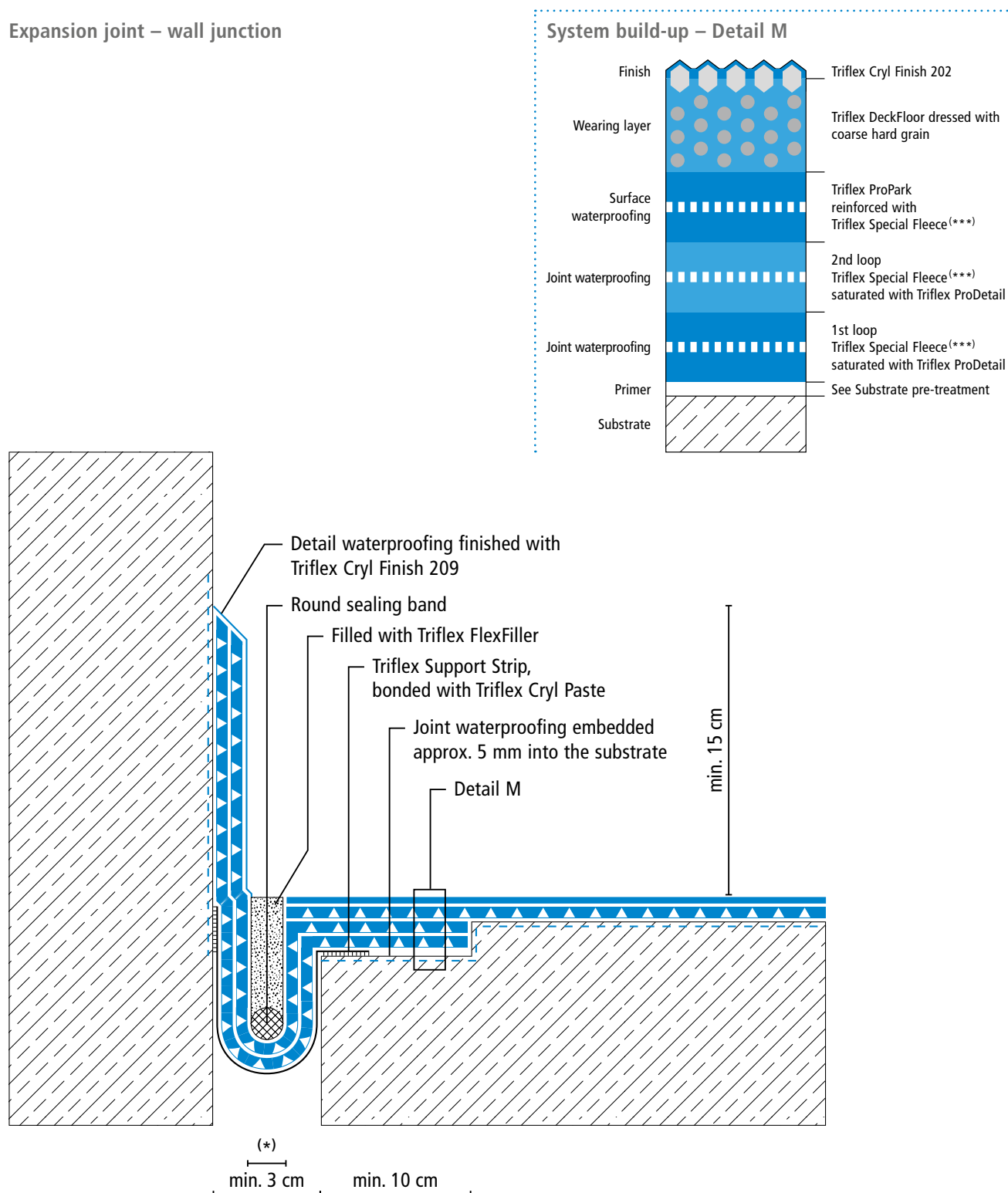
Height differences where the fleece overlaps are exaggerated.





## System drawings

### Expansion joint – wall junction



(\*) Omission of surface waterproofing and wearing layer (see system description)

(\*\*\*) Triflex Special Fleece or Triflex Special Fleece PF

Height differences where the fleece overlaps are exaggerated.