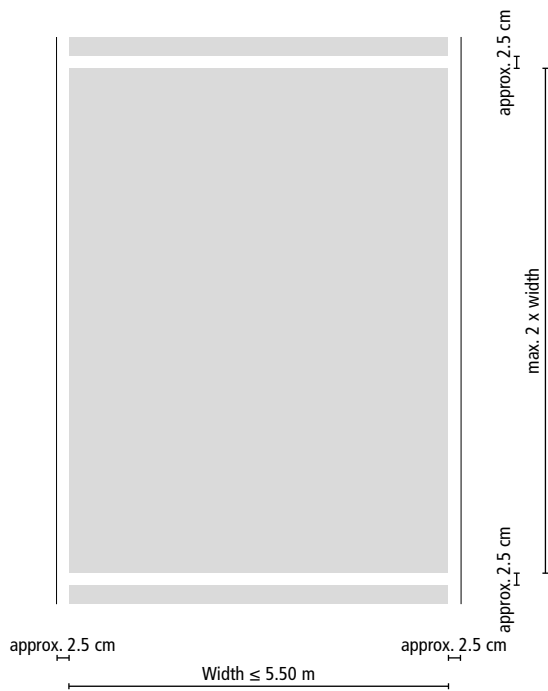


Triflex ProPark® – Variant 2



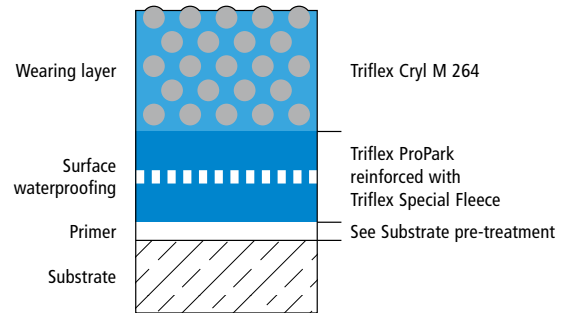
System drawings

Surface subdivision

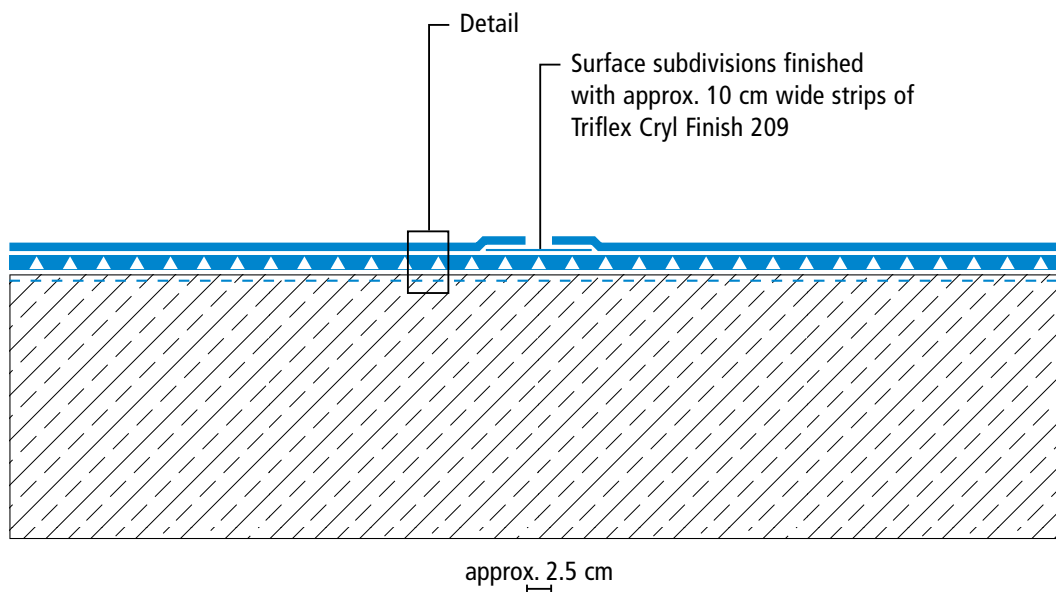


Drawing no.: ProPark-1301

System build-up – Detail



Area

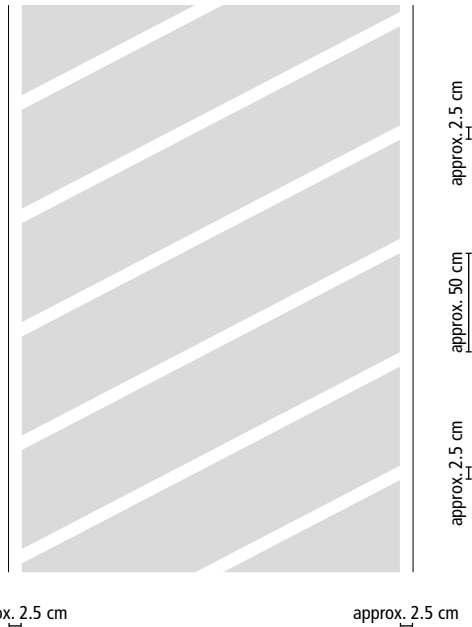




Top deck Waterproofing System (OS 10)

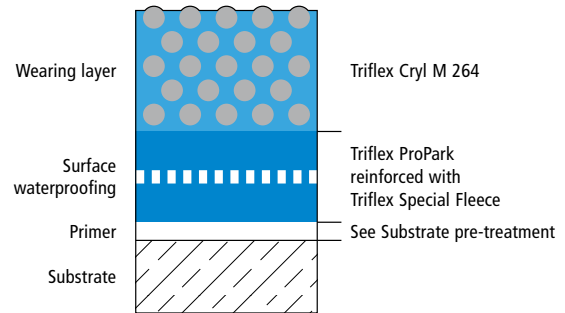
Triflex ProPark[®] – Variant 2

Ramp surface subdivision

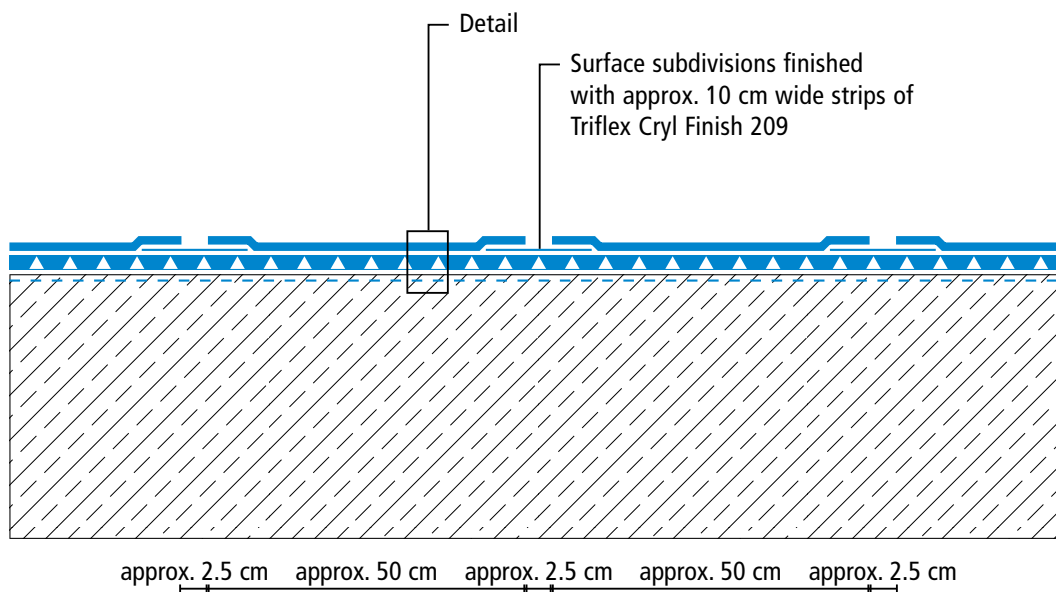


Drawing no.: ProPark-1303

System build-up – Detail



Ramp



Drawing no.: ProPark-1304

Height differences between fleece overlaps are exaggerated.

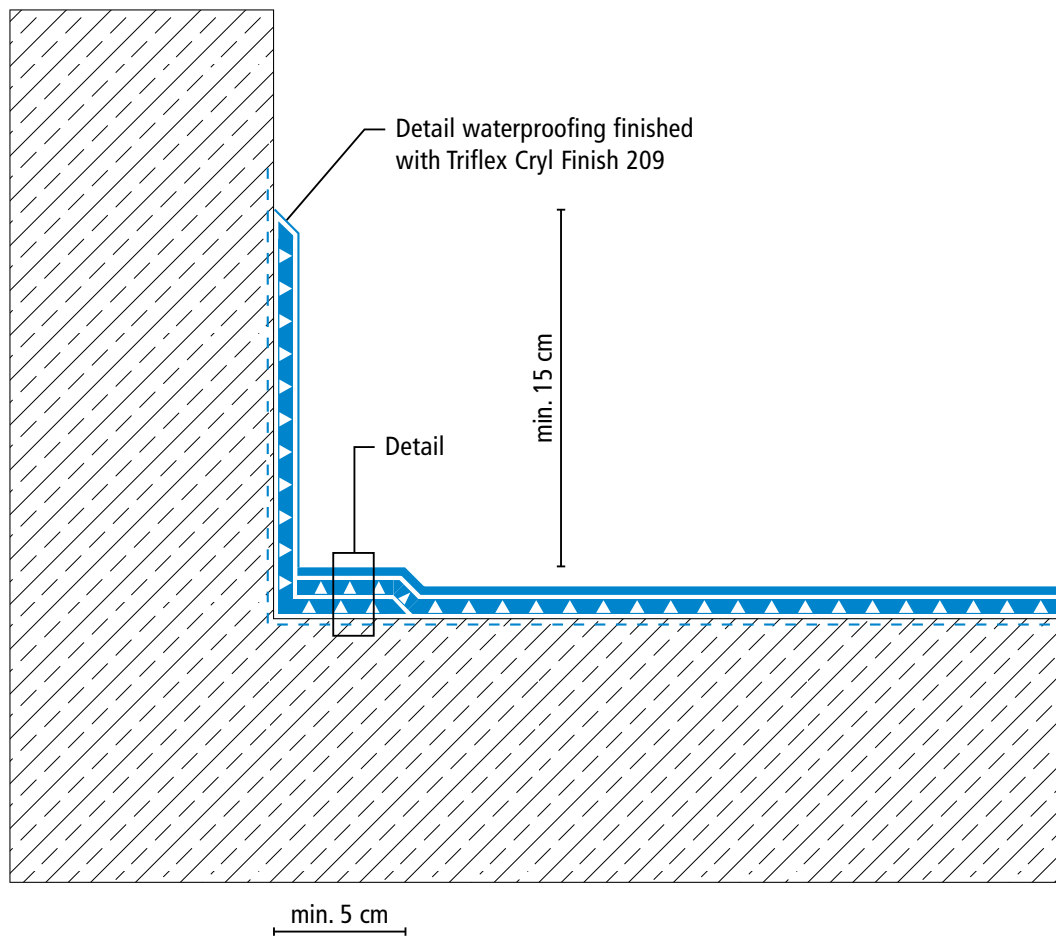
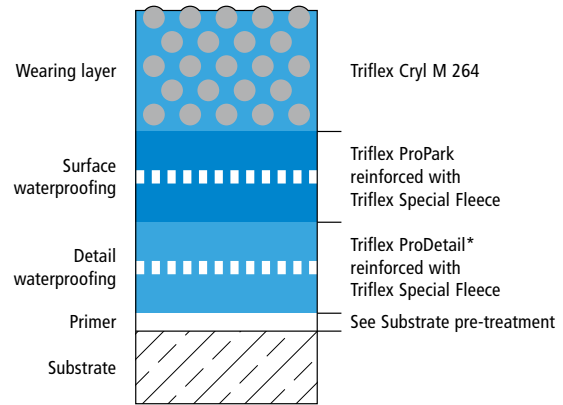
Triflex ProPark® – Variant 2



System drawings

Wall junction

System build-up – Detail



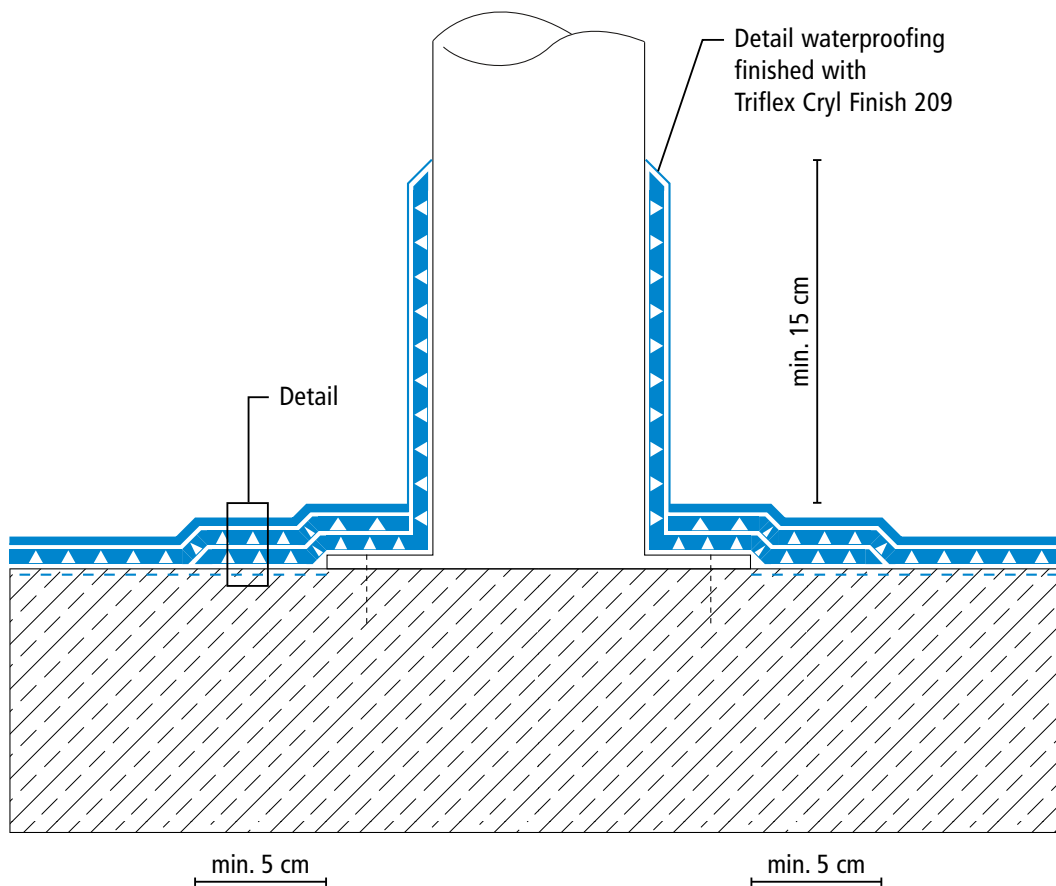
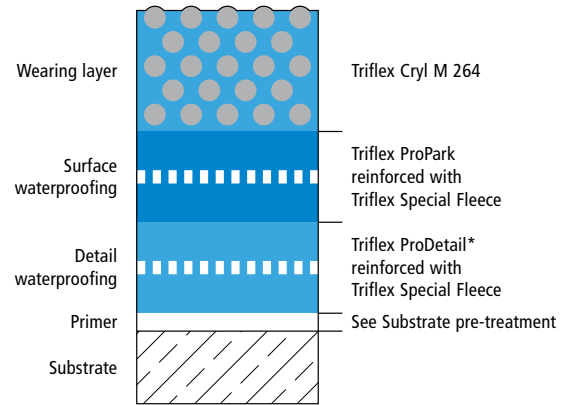
Triflex ProPark[®] – Variant 2



System drawings

Settlement joint

System build-up – Detail



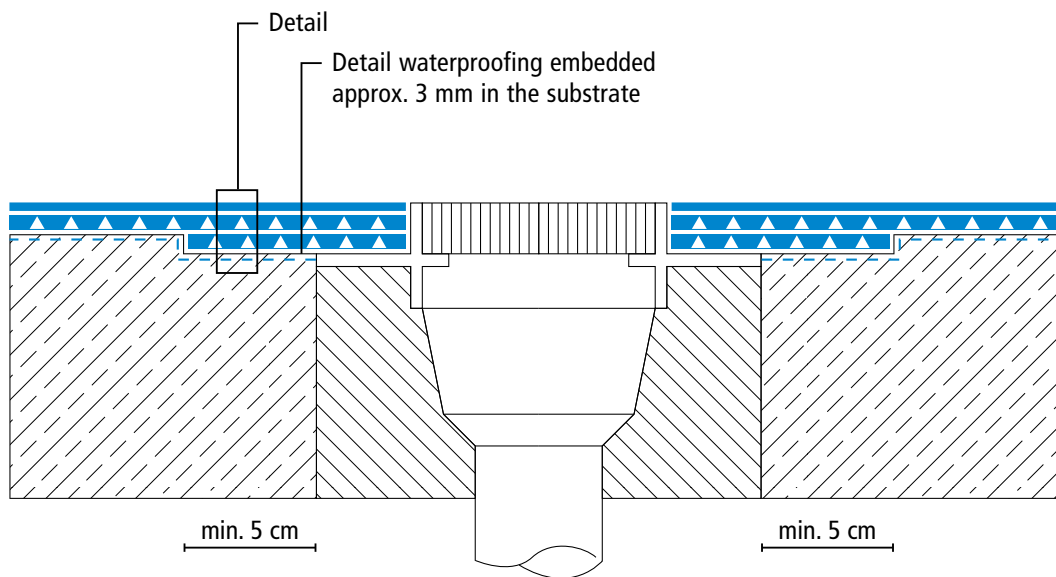
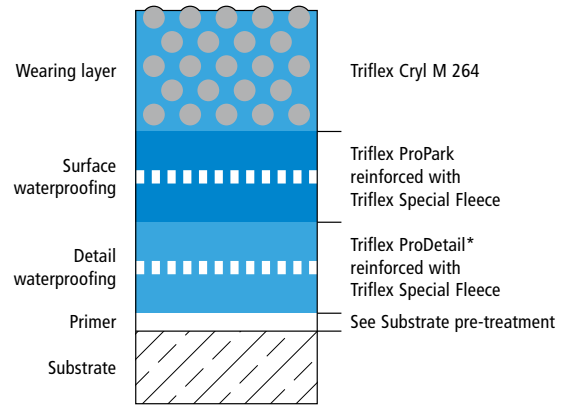
Triflex ProPark[®] – Variant 2



System drawings

Gully/Gutter

System build-up – Detail



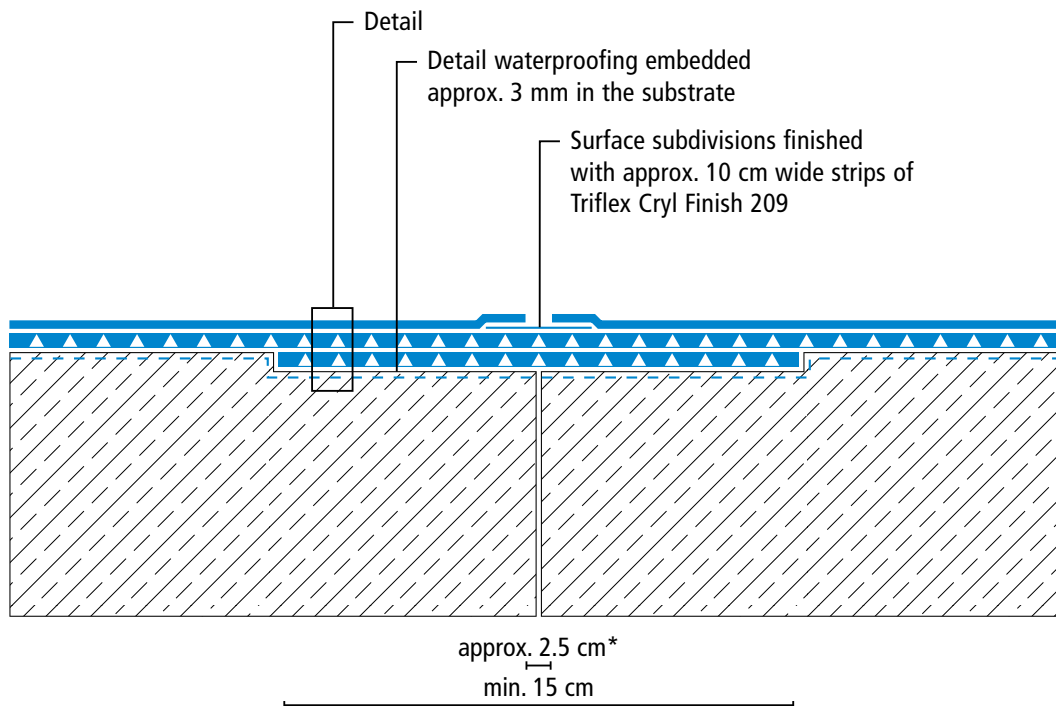
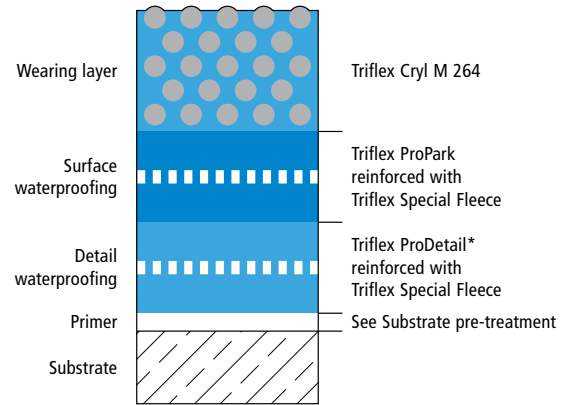
Triflex ProPark[®] – Variant 2



System drawings

Construction joint

System build-up – Detail



* Omission of wearing layer (see system description)

Height differences between fleece overlaps are exaggerated.

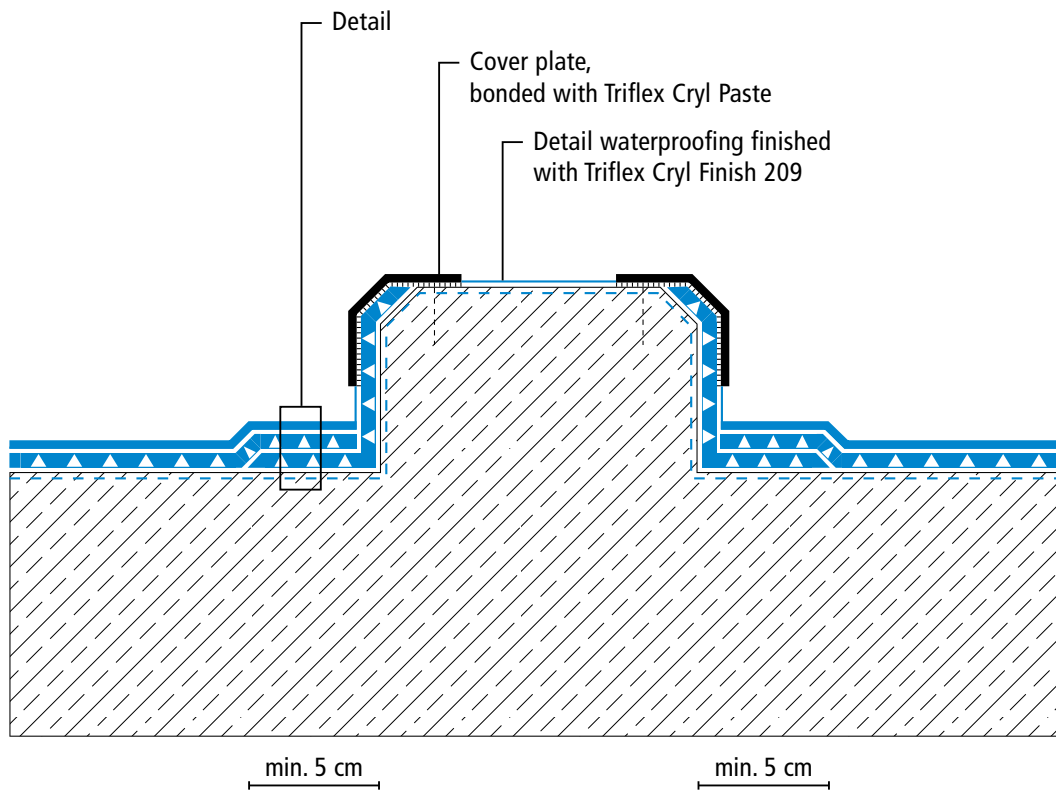
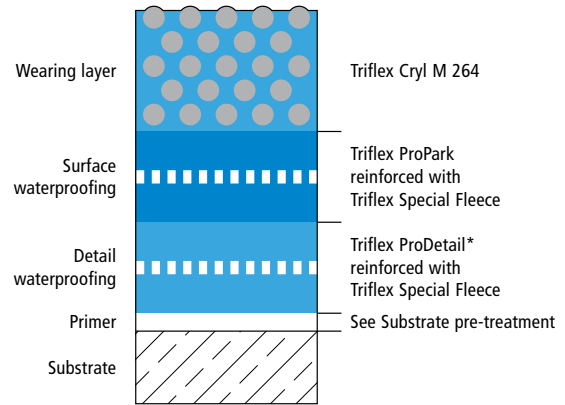
Triflex ProPark® – Variant 2



System drawings

Kerb

System build-up – Detail

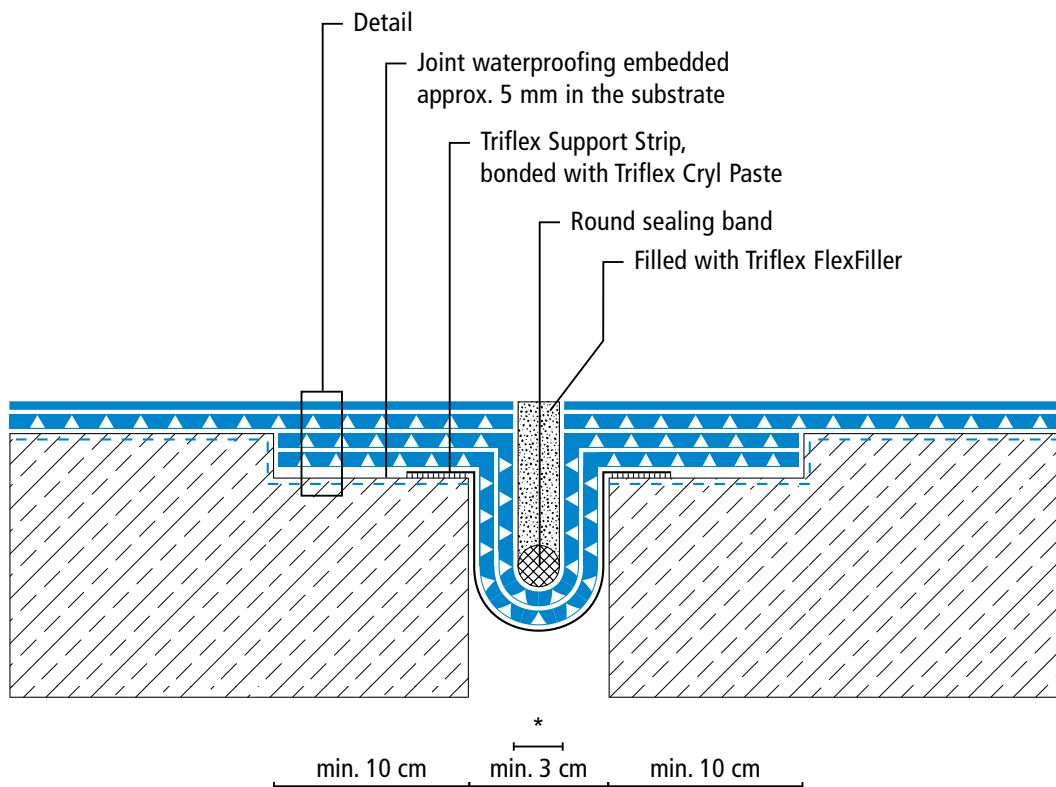
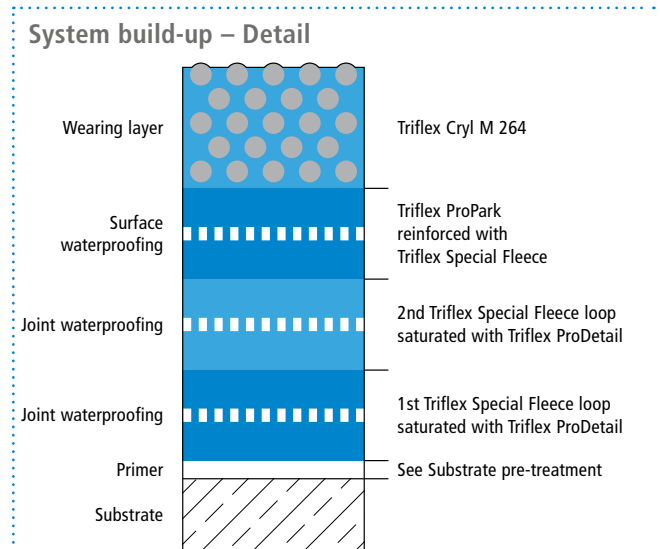


Triflex ProPark® – Variant 2



System drawings

Settlement joint surface



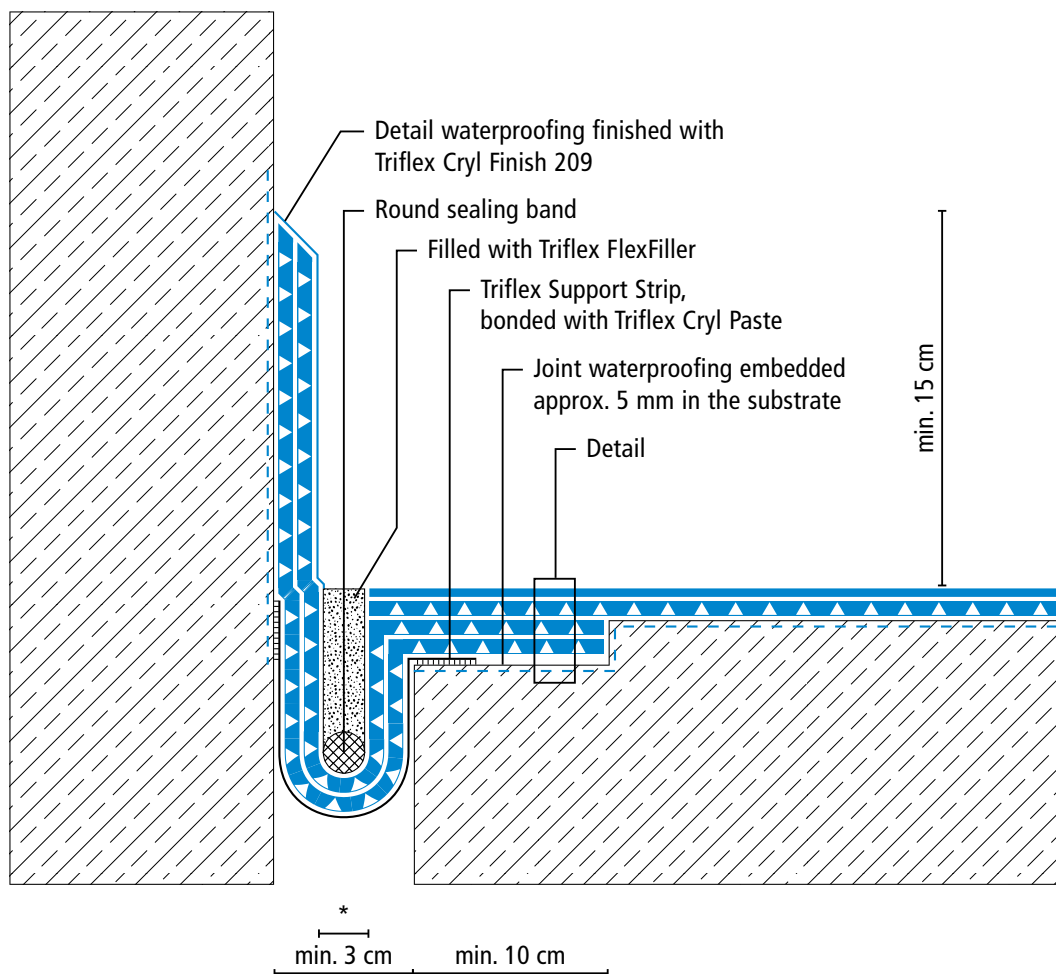
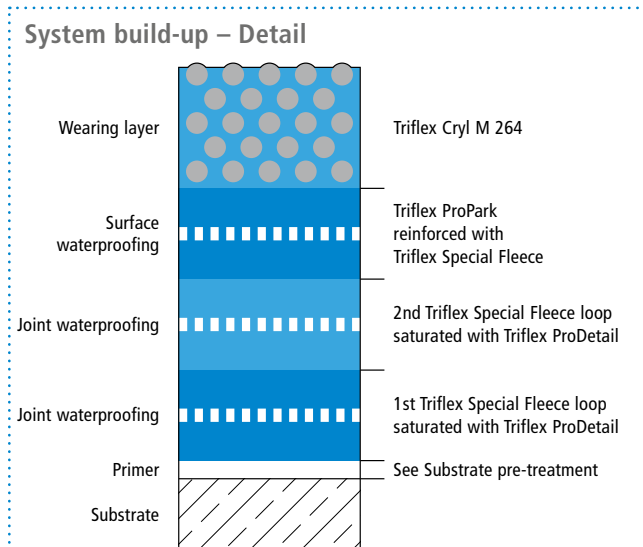
* Omission of surface waterproofing and wearing layer (see system description)
Height differences between fleece overlaps are exaggerated.

Triflex ProPark® – Variant 2



System drawings

Settlement joint – wall junction



* Omission of surface waterproofing and wearing layer (see system description)
Height differences between fleece overlaps are exaggerated.