

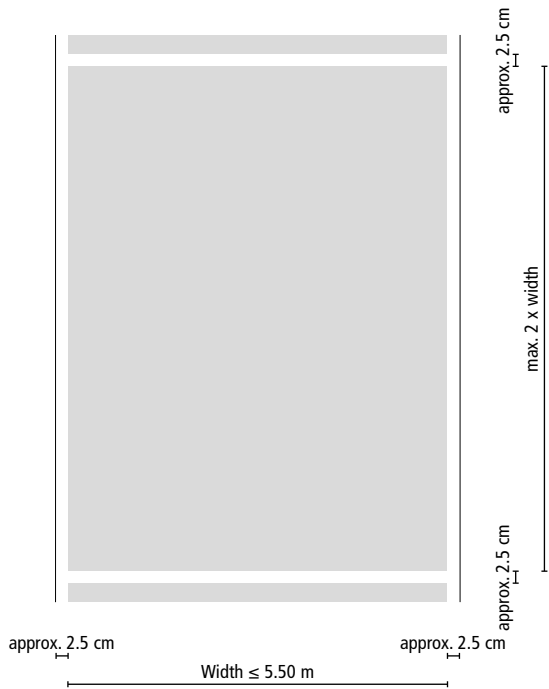


Parking deck waterproofing system (OS 10, OS 11a/b)

# Triflex ProPark<sup>®</sup> Variation 1

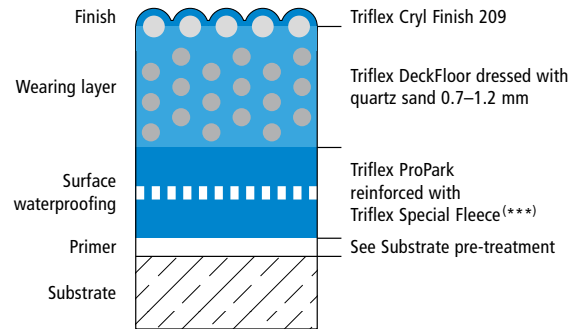
## System drawings

### Surface subdivision

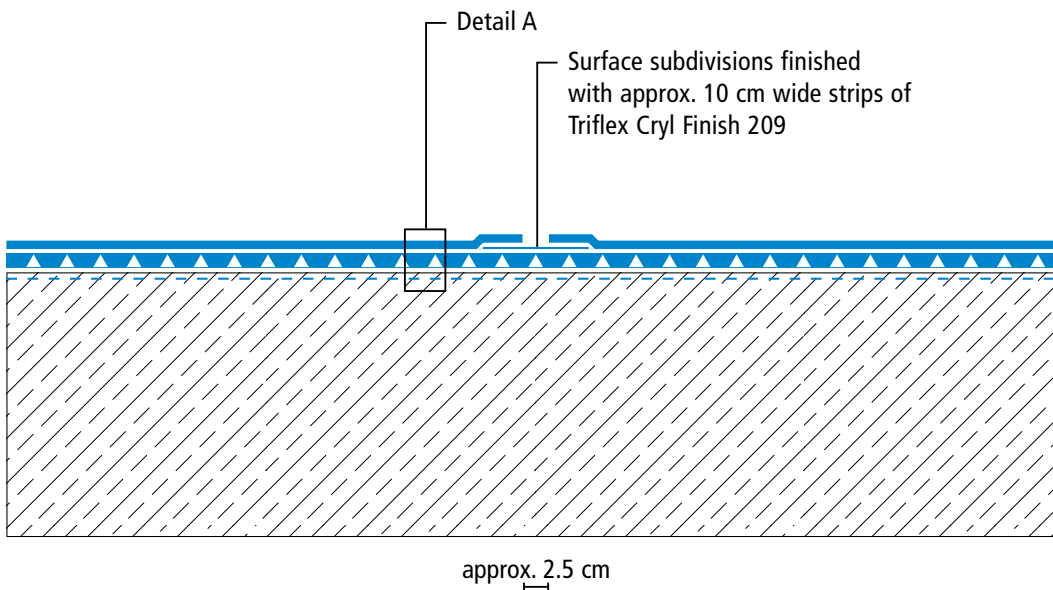


Drawing no.: ProPark-1301

### System build-up – Detail A



### Surface



Drawing no.: ProPark-1302

(\*\*\*) Triflex Special Fleece or Triflex Special Fleece PF  
Height differences where the fleece overlaps are exaggerated.

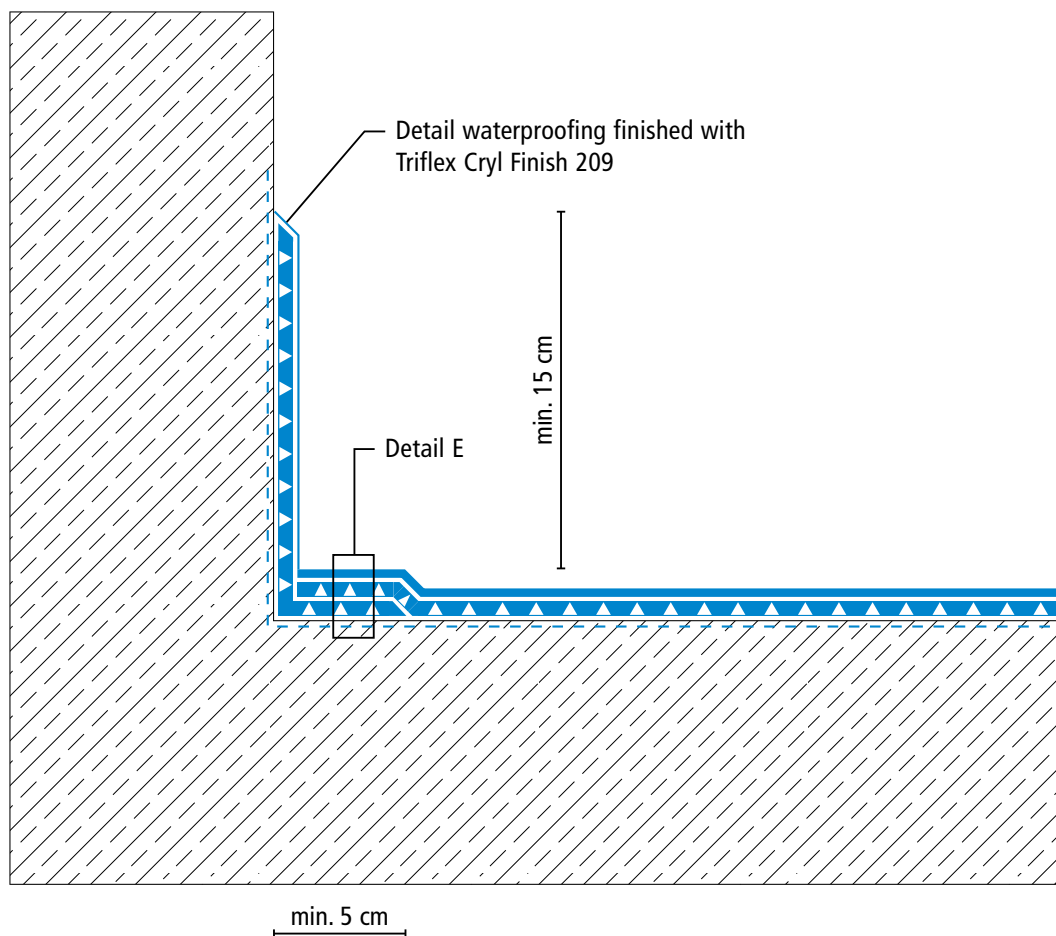
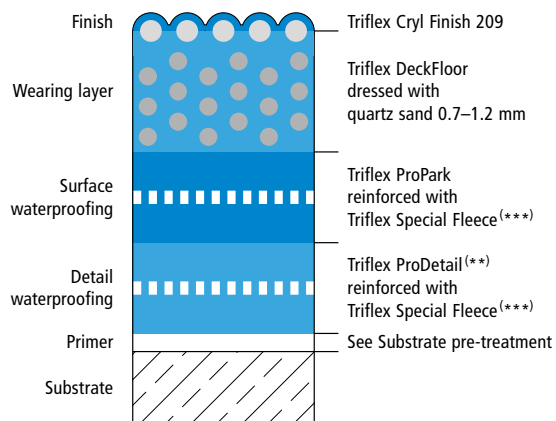
# Triflex ProPark<sup>®</sup> Variation 1



## System drawings

### Wall junction

### System build-up – Detail E



(\*\*) Horizontal details (e.g. construction joints) can be waterproofed with Triflex ProDetail or Triflex ProPark.  
 (\*\*\*) Triflex Special Fleece or Triflex Special Fleece PF  
 Height differences where the fleece overlaps are exaggerated.

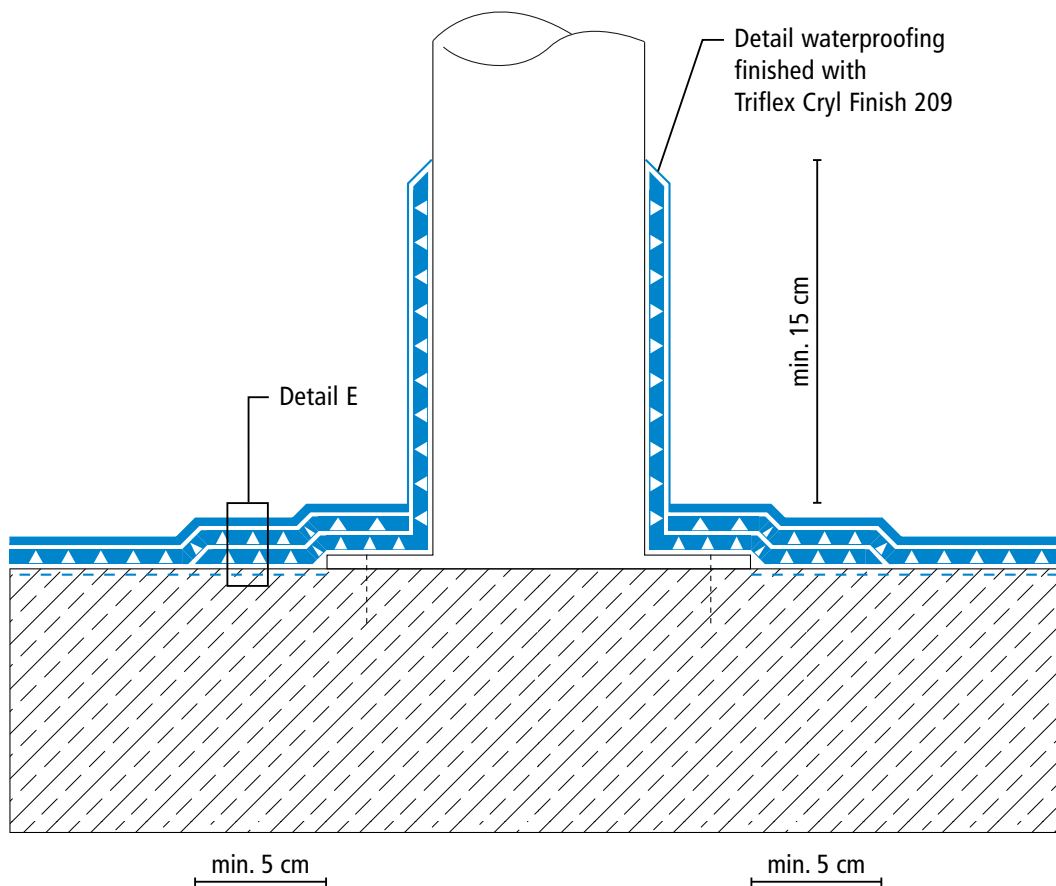
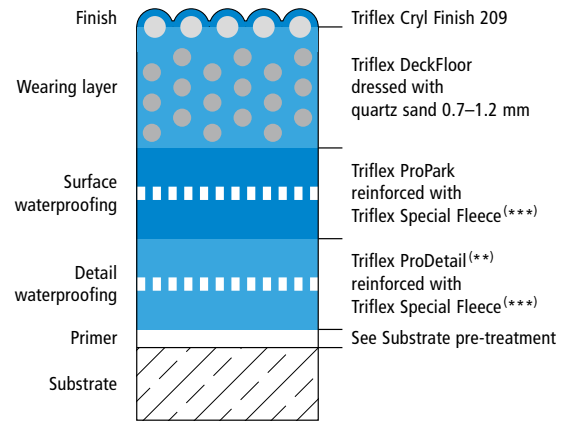
# Triflex ProPark<sup>®</sup> Variation 1



## System drawings

### Prop connector

### System build-up – Detail E



(\*\*) Horizontal details (e.g. construction joints) can be waterproofed with Triflex ProDetail or Triflex ProPark.  
(\*\*\*) Triflex Special Fleece or Triflex Special Fleece PF  
Height differences where the fleece overlaps are exaggerated.



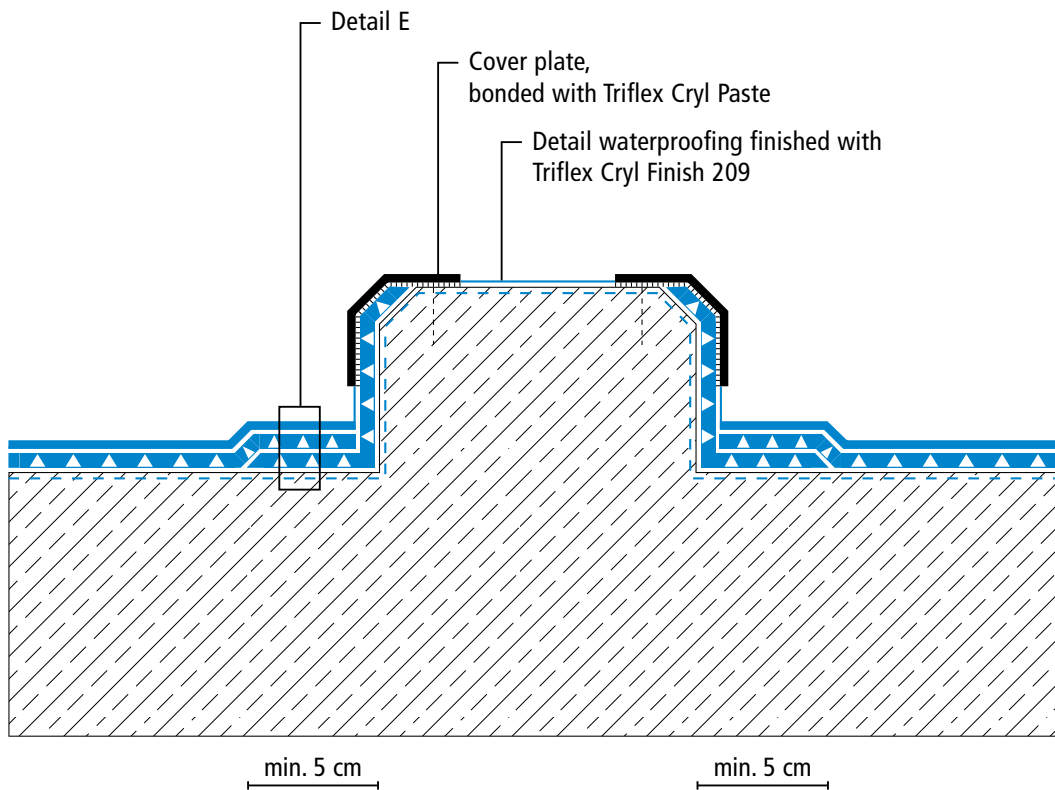
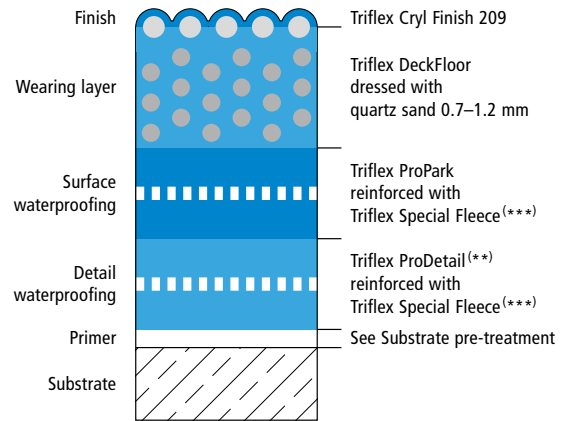
Parking deck waterproofing system (OS 10, OS 11a/b)

# Triflex ProPark<sup>®</sup> Variation 1

## System drawings

Kerb

### System build-up – Detail E



(\*\*) Horizontal details (e.g. construction joints) can be waterproofed with Triflex ProDetail or Triflex ProPark.

(\*\*\*) Triflex Special Fleece or Triflex Special Fleece PF

Height differences where the fleece overlaps are exaggerated.

Drawing no.: ProPark-1307



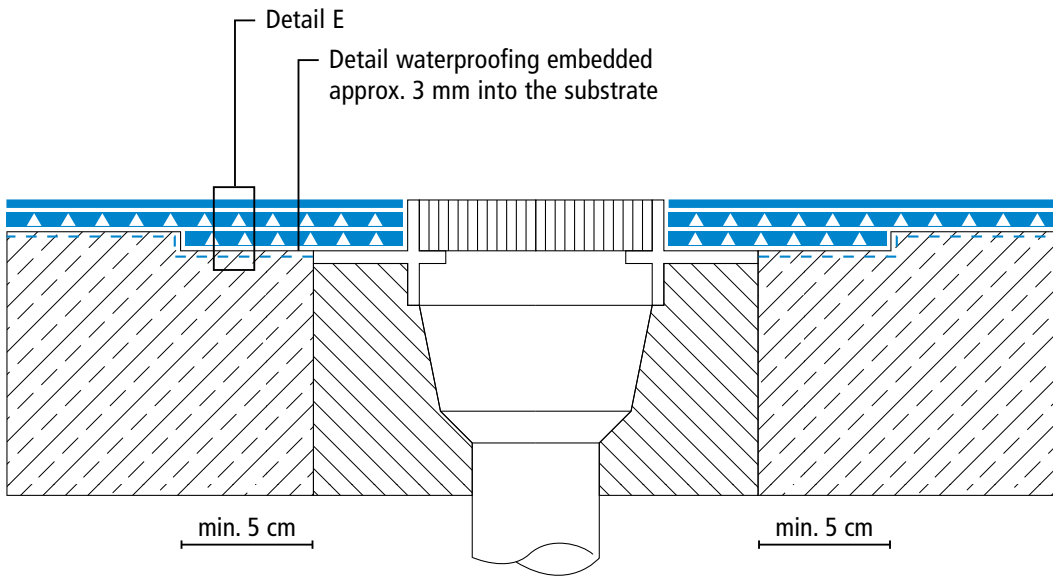
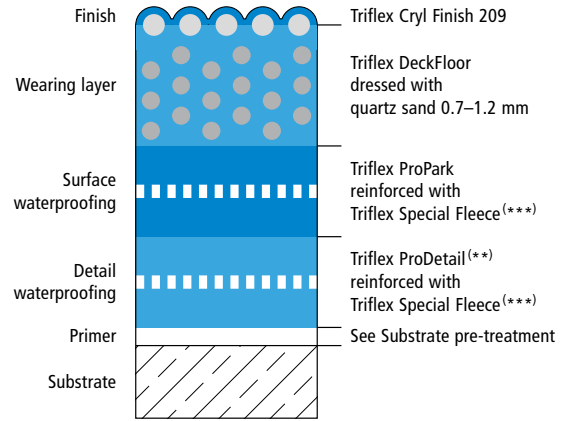
Parking deck waterproofing system (OS 10, OS 11a/b)

# Triflex ProPark<sup>®</sup> Variation 1

## System drawings

### Gully/Gutter

### System build-up – Detail E



(\*\*) Horizontal details (e.g. construction joints) can be waterproofed with Triflex ProDetail or Triflex ProPark.

(\*\*\*) Triflex Special Fleece or Triflex Special Fleece PF

Height differences where the fleece overlaps are exaggerated.

Drawing no.: ProPark-1308

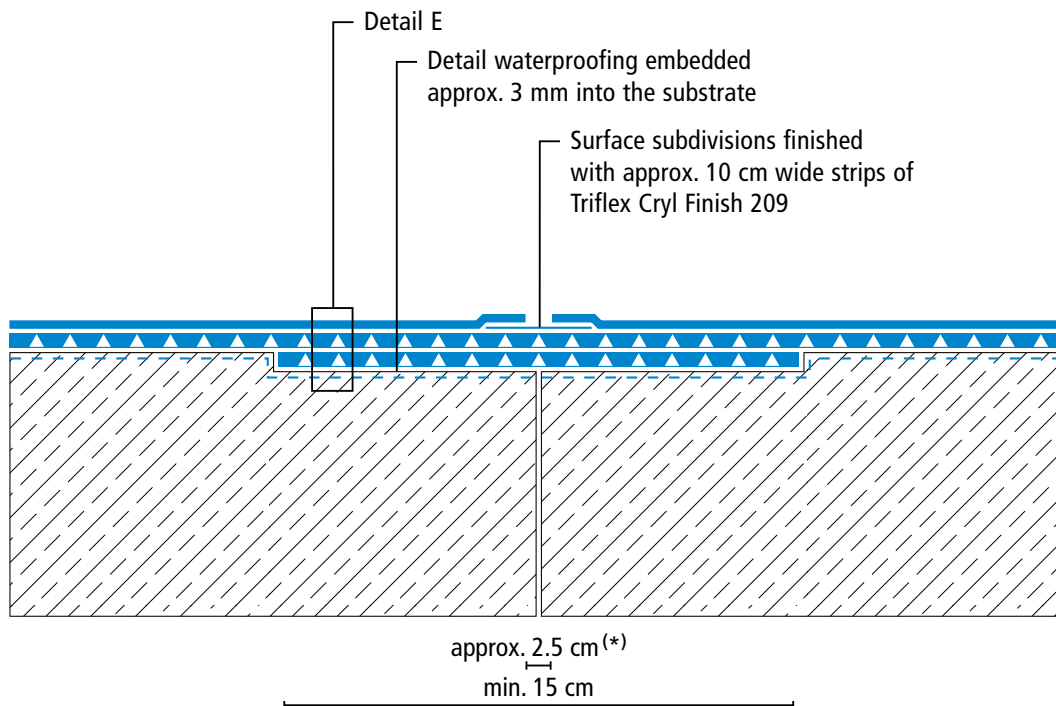
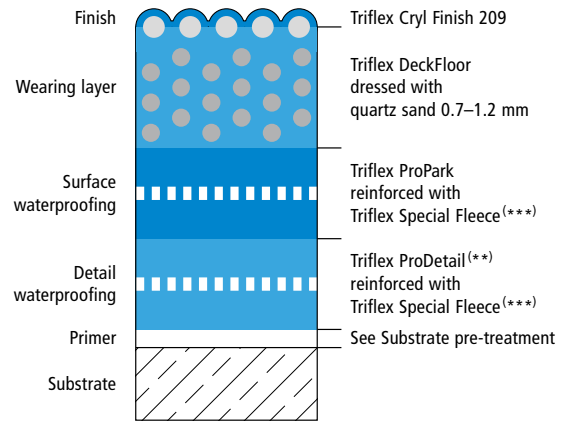
# Triflex ProPark® Variation 1



## System drawings

### Construction joint

### System build-up – Detail E



(\*) Omission of wearing layer (see system description)

(\*\*) Horizontal details (e.g. construction joints) can be waterproofed with Triflex ProDetail or Triflex ProPark.

(\*\*\*) Triflex Special Fleece or Triflex Special Fleece PF

Height differences where the fleece overlaps are exaggerated.

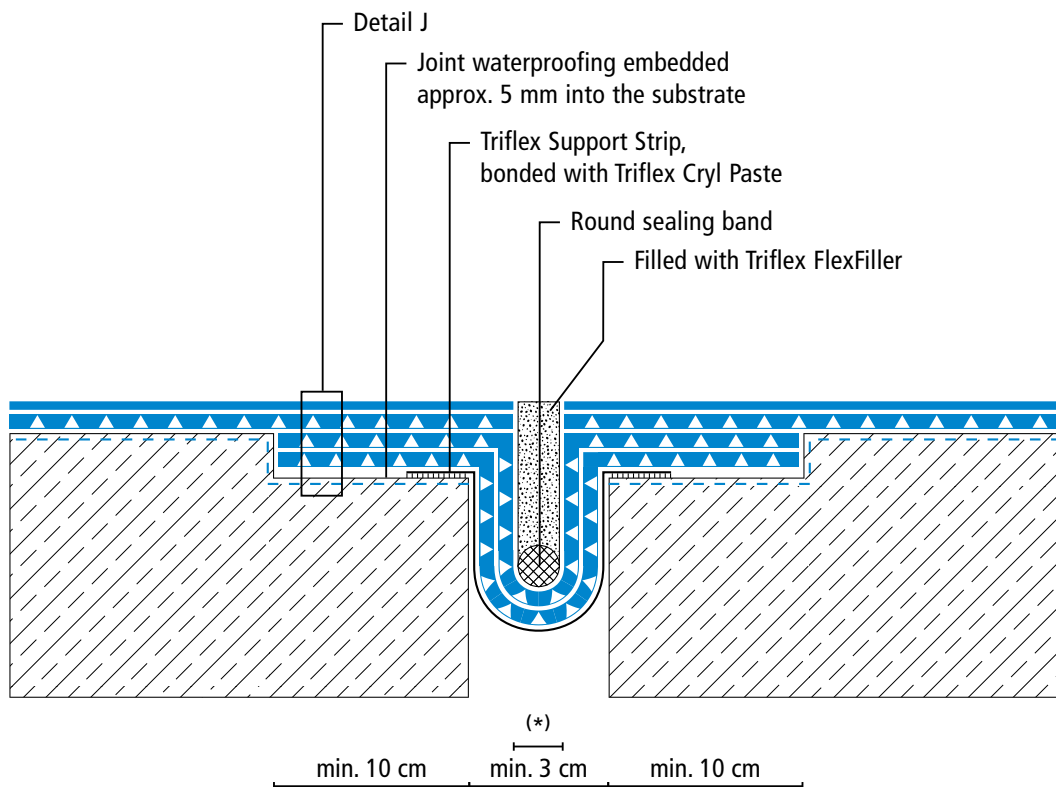
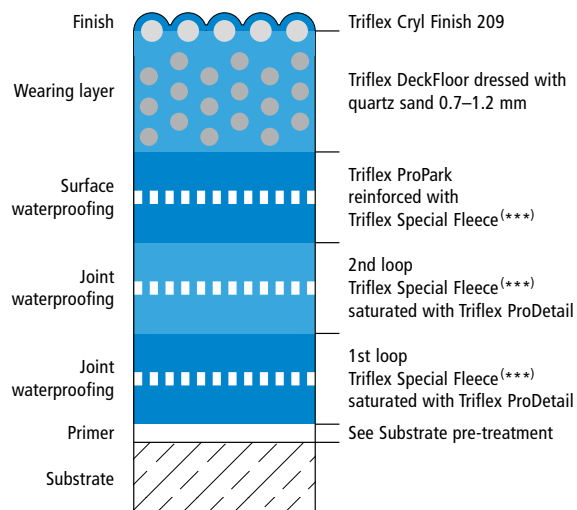
# Triflex ProPark® Variation 1



## System drawings

### Expansion joint surface

### System build-up – Detail J



(\*) Omission of surface waterproofing and wearing layer (see system description)

(\*\*\*) Triflex Special Fleece or Triflex Special Fleece PF

Height differences where the fleece overlaps are exaggerated.

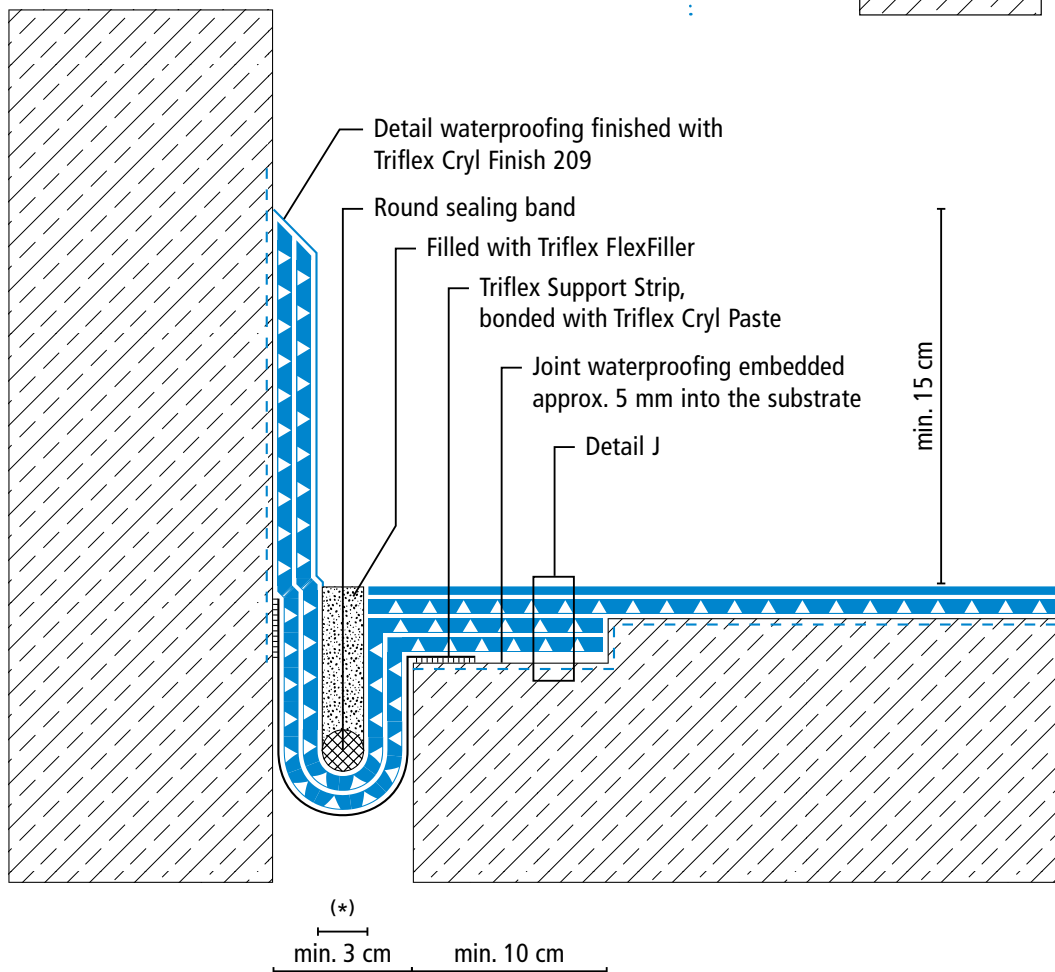
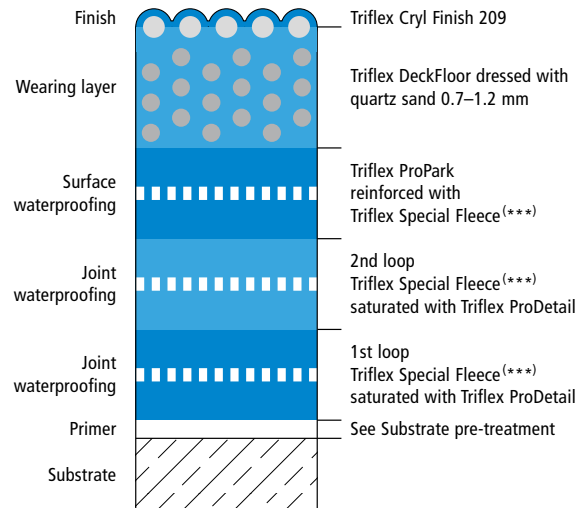
# Triflex ProPark® Variation 1



## System drawings

### Expansion joint – wall junction

### System build-up – Detail J



(\*) Omission of surface waterproofing and wearing layer (see system description)

(\*\*\*) Triflex Special Fleece or Triflex Special Fleece PF

Height differences where the fleece overlaps are exaggerated.